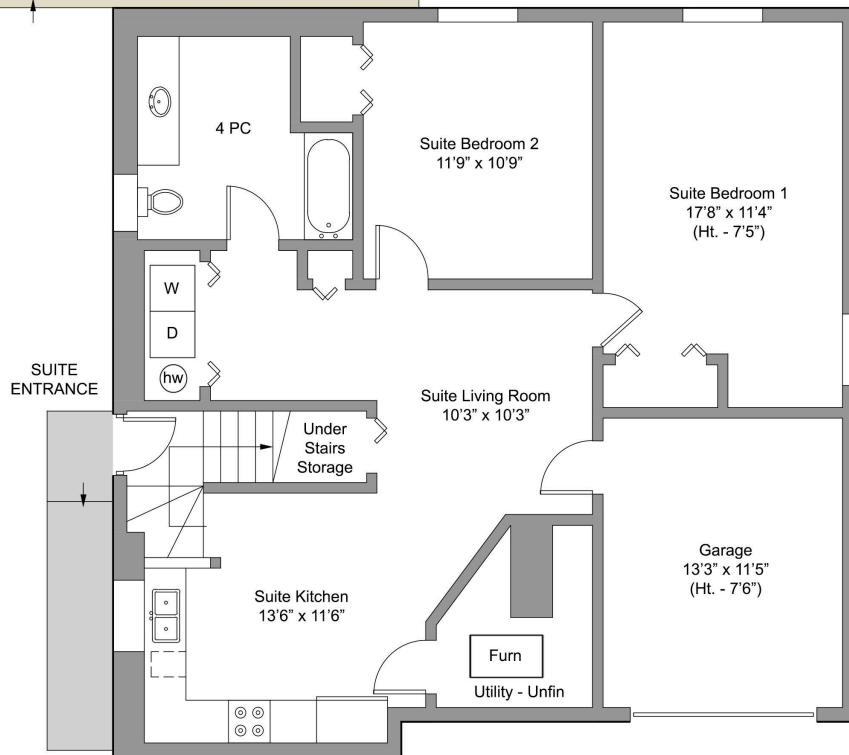
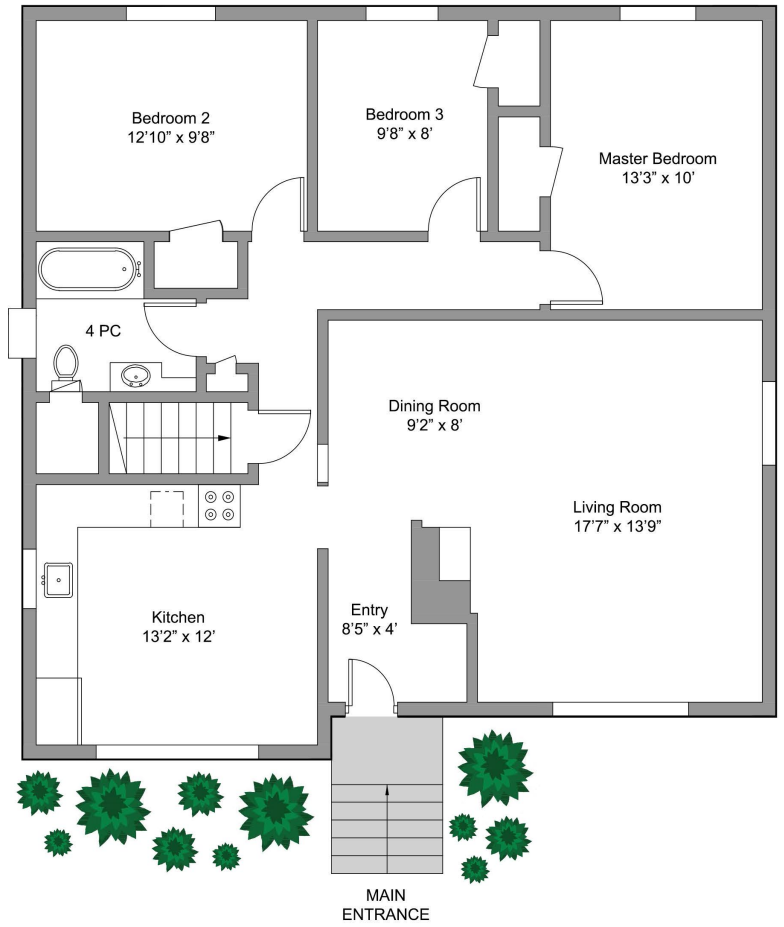
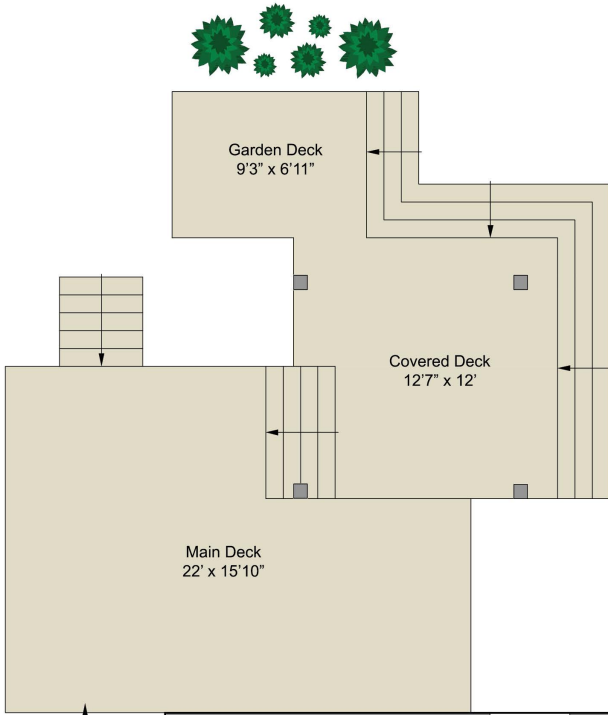


Main Floor
1196 Sqft.
(Avg Ht. - 8')



Lower Floor
1196 Sqft.
(Avg Ht. - 7'4")

1297 Derby Rd.

*This floor-plan was created for the exclusive use of
Nancy DiCastrì & Laurie Lidstone
with RE/MAX Camosun
Area and dimensions are approximate, buyer to verify on site.*

FLOOR	AREA (Sq. Ft.)		
	Finished	Unfinished	Garage
Main	1196	0	
Lower	959	70	167
Total	2155	202	167
Greenhouse	0	132	0