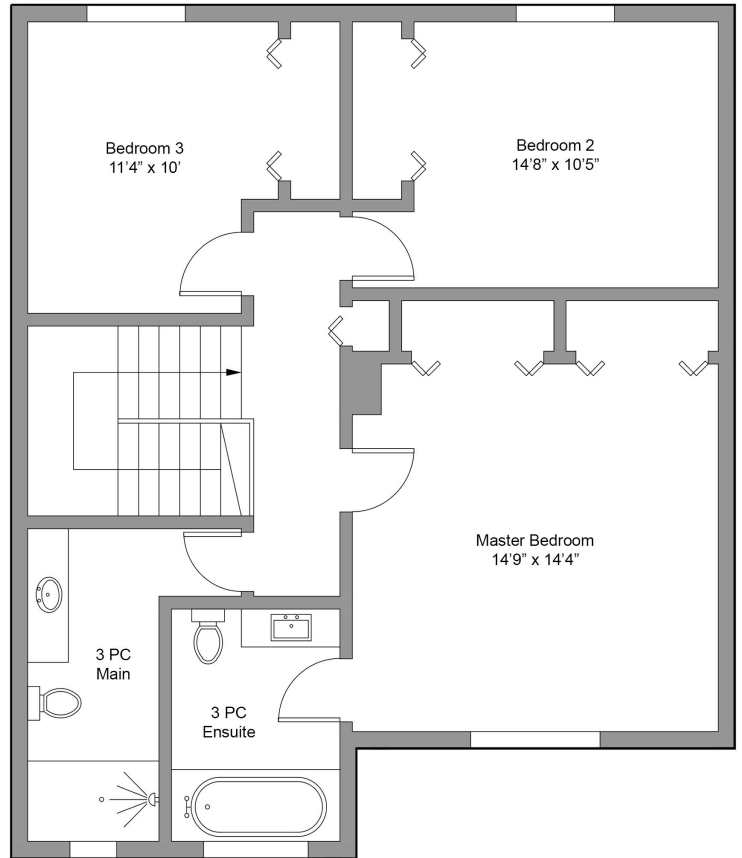
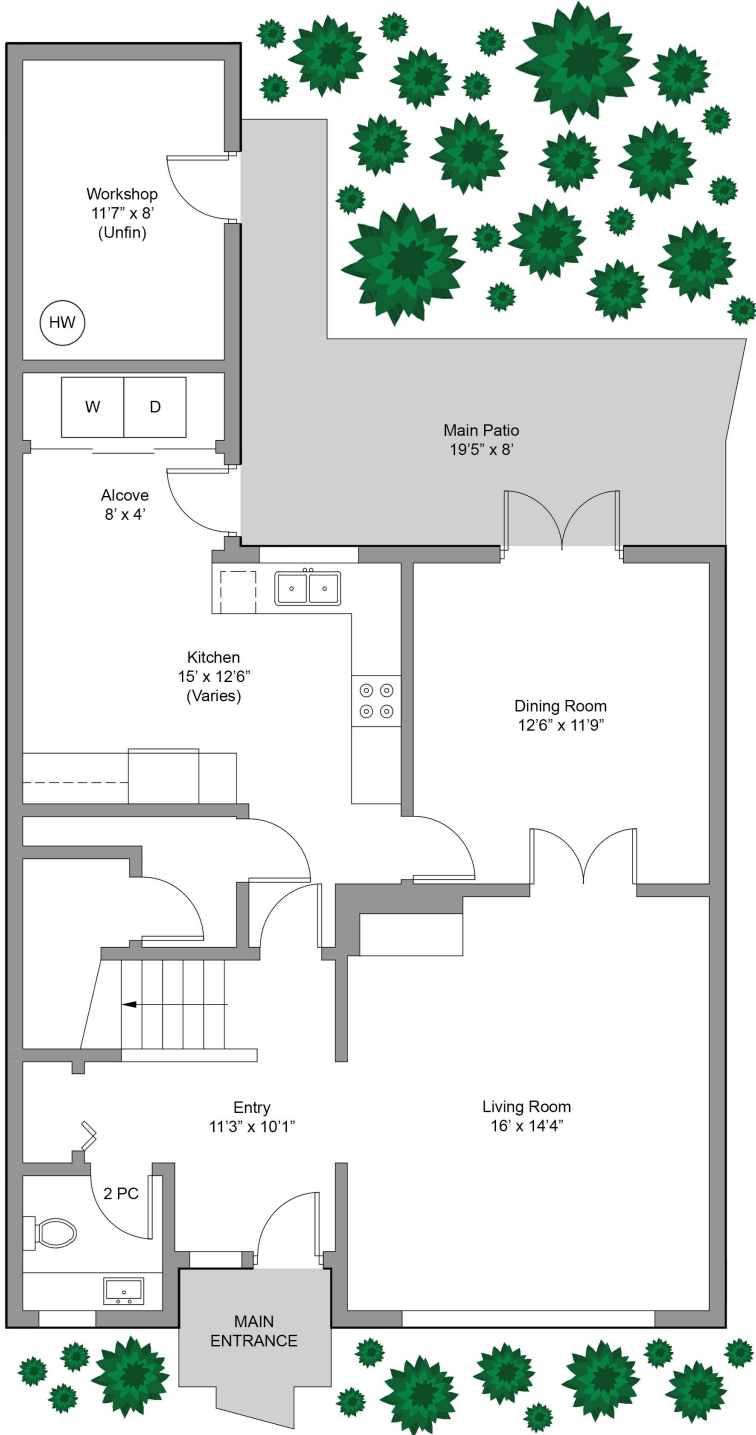


Upper Floor 892 Sqft. (Avg Ht. - 8')



Main Floor 1040 Sqft. (Avg Ht. - 8')

6-1019 Pemberton Rd.

*This floor-plan was created for the exclusive use of
Nancy DiCastrì & Laurie Lidstone
with RE/MAX Camosun
Area and dimensions are approximate, buyer to verify on site.*

FLOOR	AREA (Sq. Ft.)		
	Finished	Unfinished	Garage
Upper	892	0	
Main	921	119	
Total	1813	119	