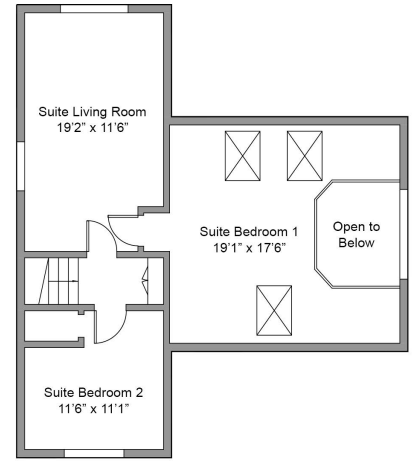
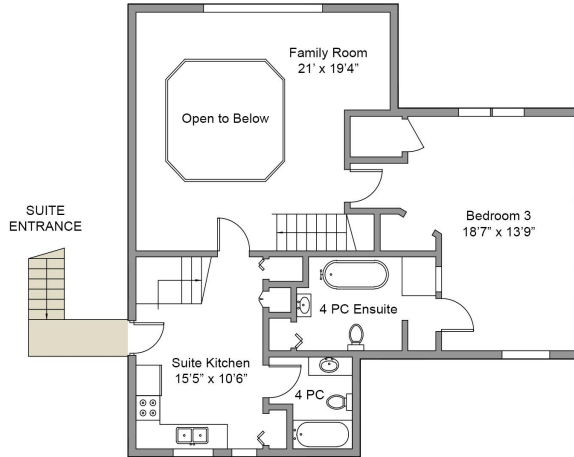


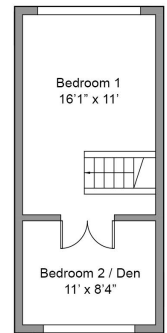
**Upper Floor**  
770 Sqft.  
(Avg Ht. - 8'6")



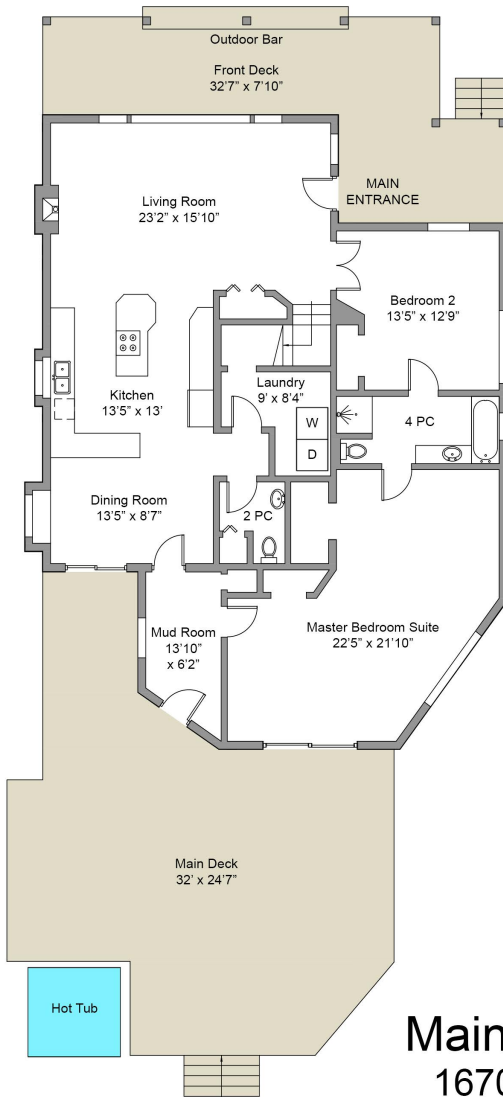
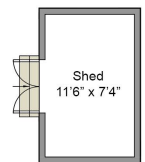
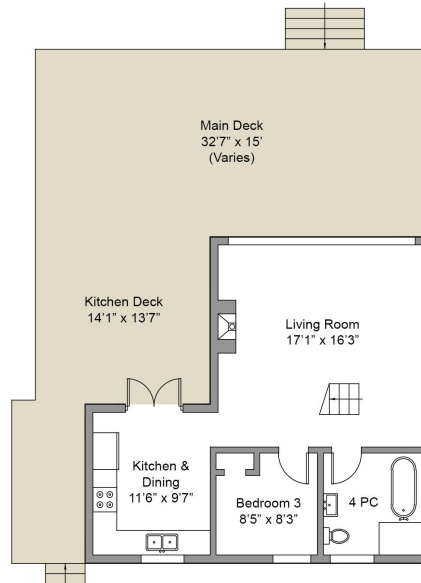
**Second Floor**  
1004 Sqft.  
(Avg Ht. - 7'6")



**Cottage Upper**  
323 Sqft.  
(Avg Ht. - 8')



**Cottage Main**  
615 Sqft.  
(Avg Ht. - 7'10")



**Main Floor**  
1670 Sqft.  
(Avg Ht. - 7'9")



**2144 Angus Rd.**

*This floor-plan was created for the exclusive use of Nancy DiCastrì / Laurie Lidstone & RE/MAX Camosun. Area and dimensions are approximate, buyer to verify on site.*

FLOOR	AREA (Sq. Ft.)		
	Finished	Unfinished	Garage
Upper	770	0	
Second	1004	0	
Main	1670	0	
<b>Total</b>	<b>4382</b>	<b>104</b>	
Cottage Upper	323	0	
Cottage Main	615	0	
Shed	0	104	