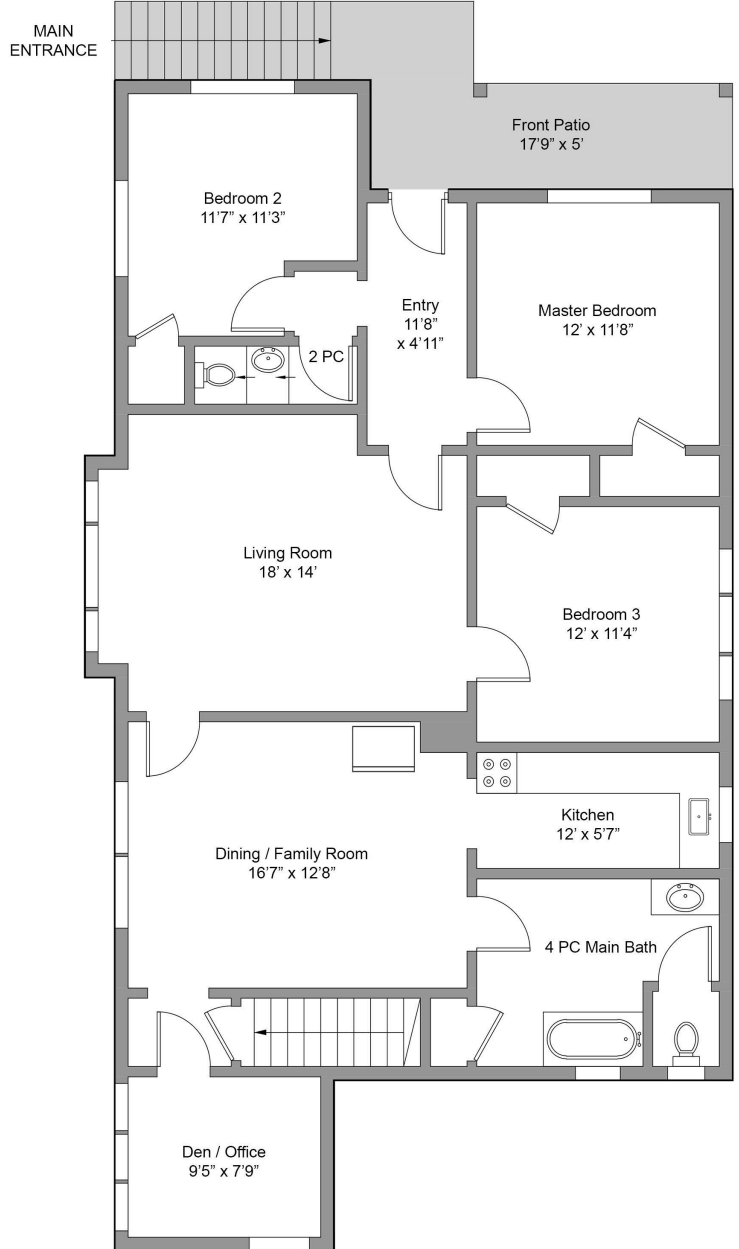


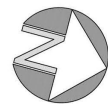
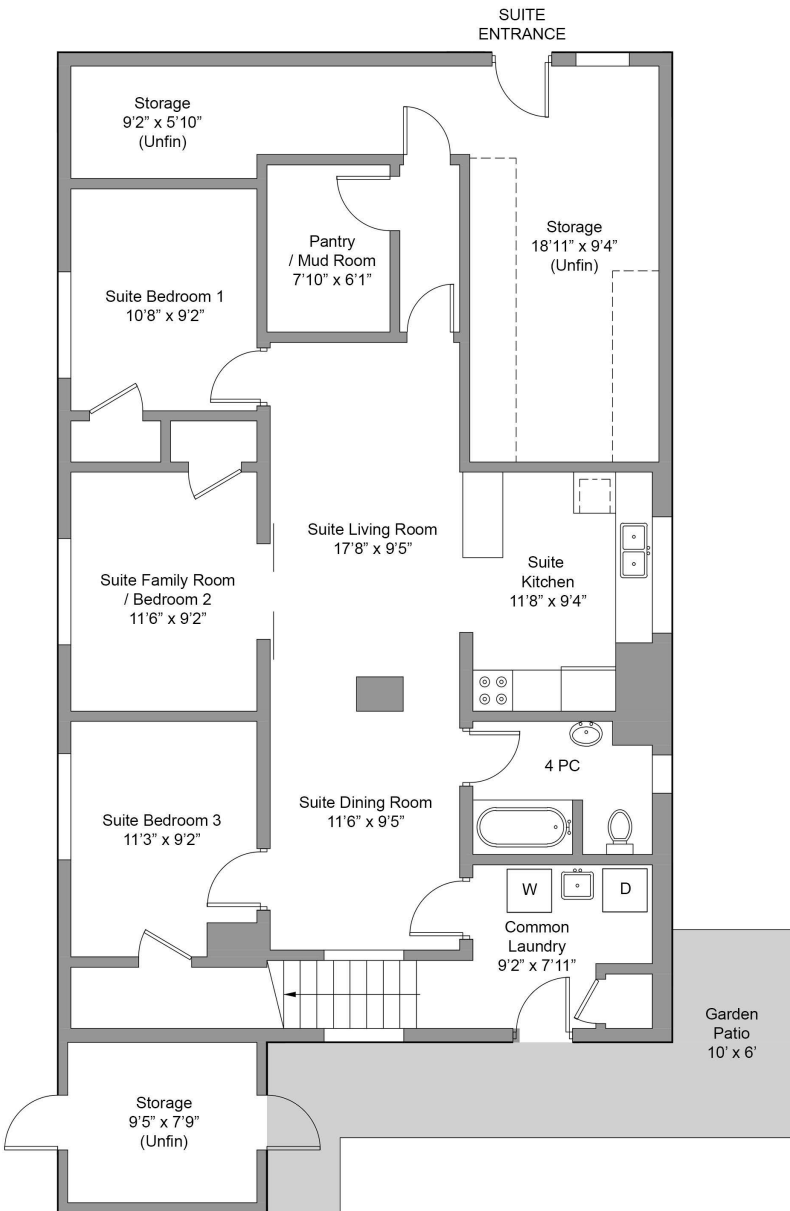
Main Floor

1477 Sqft.
(Avg Ht. - 8'10")



Lower Floor

1528 Sqft.
(Avg Ht. - 6'8")



2509 Prior St.

This floor-plan was created for the exclusive use of Nancy DiCastrì / Laurie Lidstone & RE/MAX Camosun. Area and dimensions are approximate, buyer to verify on site.

| FLOOR | AREA (Sq. Ft.) | | |
|-------|----------------|------------|--------|
| | Finished | Unfinished | Garage |
| Main | 1477 | 0 | |
| Lower | 1105 | 423 | |
| Total | 2582 | 423 | |