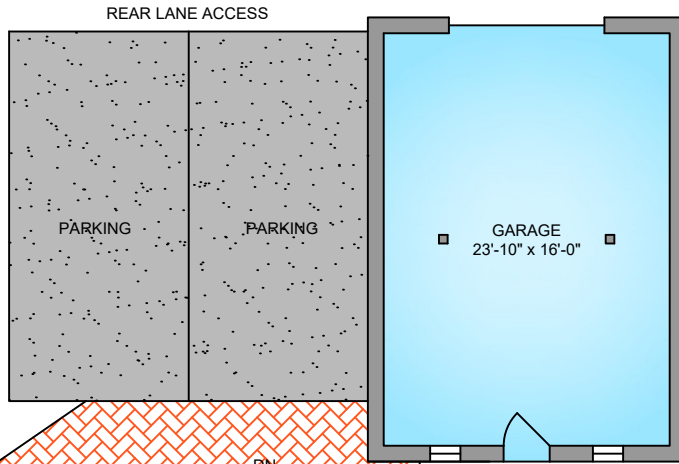


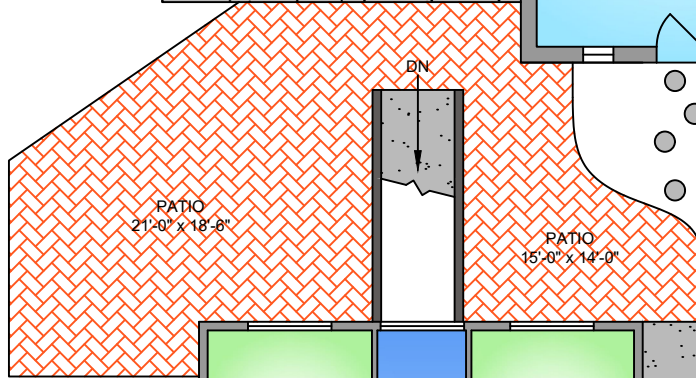
1151 OXFORD STREET
 FEBRUARY 29, 2016

PREPARED FOR THE EXCLUSIVE USE OF MARK LAWLESS
 PLANS MAY NOT BE 100% ACCURATE, IF CRITICAL BUYER TO VERIFY.

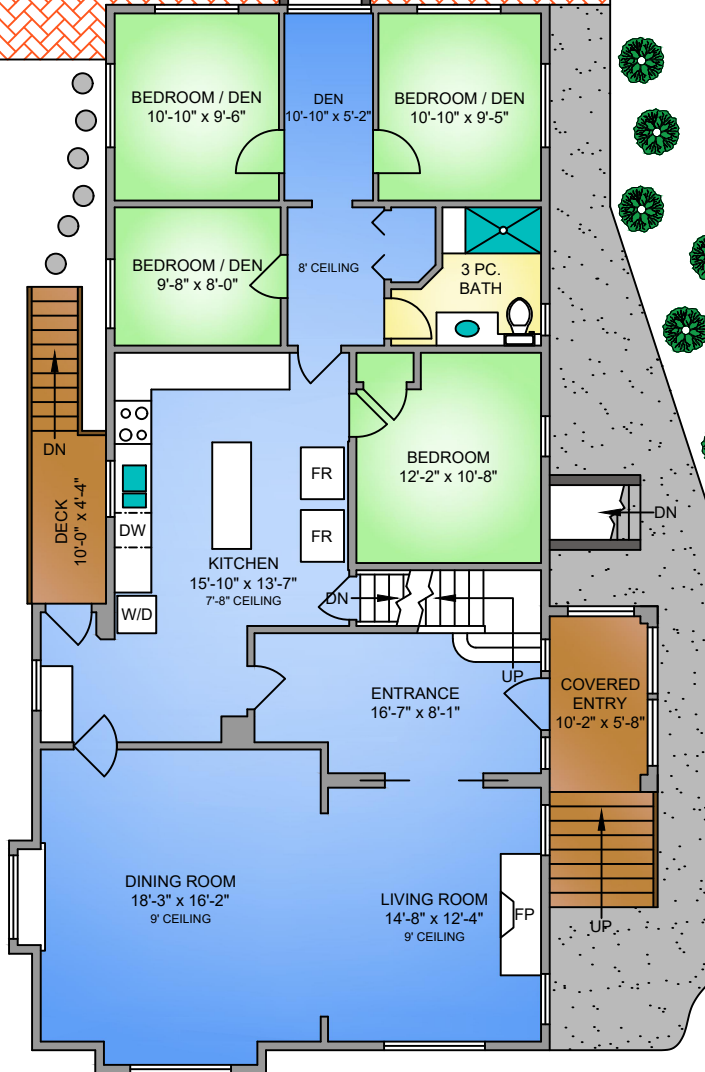
FLOOR	AREA (SQ. FT.)		
	FINISHED	GARAGE	DECK / PATIO
MAIN	1701	-	590
UPPER	682	-	594
LOWER	1674	472	-
TOTAL	4057	472	1184



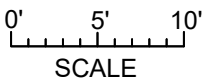
GARAGE
472 SQ. FT.



MAIN FLOOR
1701 SQ. FT.



NORTH



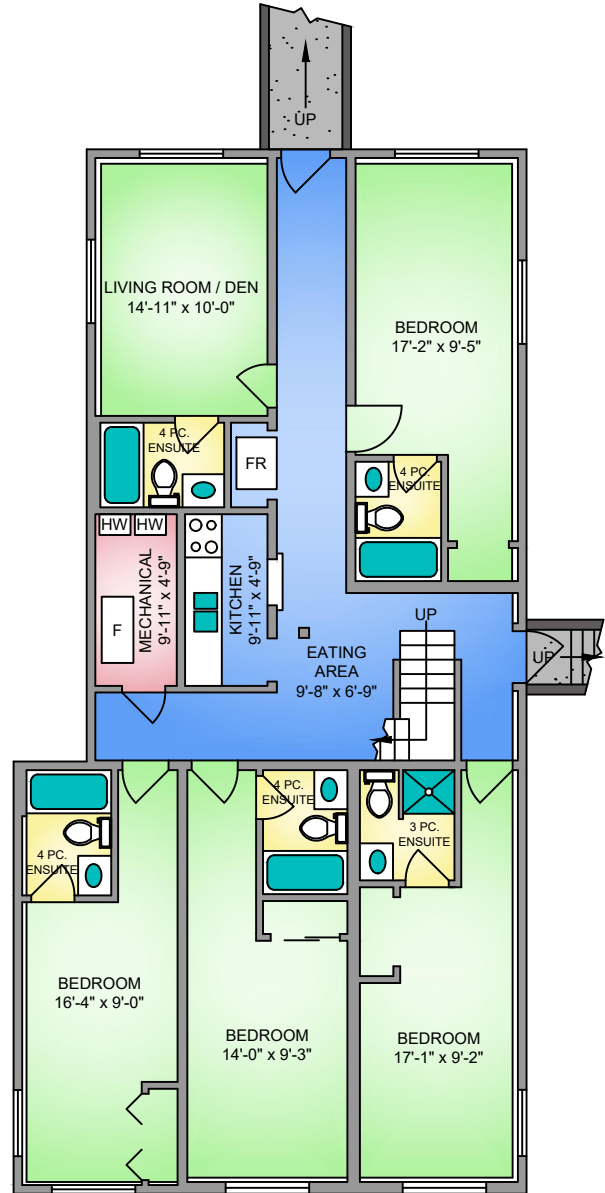
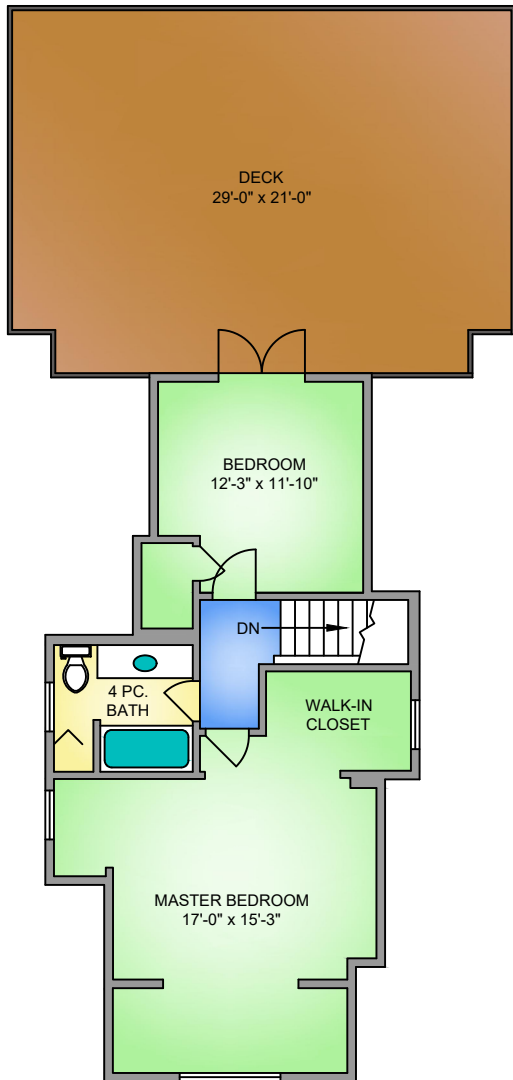
1151 OXFORD STREET
 FEBRUARY 29, 2016

PREPARED FOR THE EXCLUSIVE USE OF MARK LAWLESS
 PLANS MAY NOT BE 100% ACCURATE, IF CRITICAL BUYER TO VERIFY.

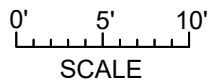
FLOOR	AREA (SQ. FT.)		
	FINISHED	GARAGE	DECK / PATIO
MAIN	1701	-	590
UPPER	682	-	594
LOWER	1674	472	-
TOTAL	4057	472	1184

LOWER FLOOR
1674 SQ. FT.
 7'-6" CEILING

UPPER FLOOR
682 SQ. FT.



NORTH



250-884-9753
 matt@propermeasure.com
 www.propermeasure.com