



Mark Lawless

PROUDLY PRESENTS



917 Maltwood Terrace

RE/MAX Camosun
4400 Chaterton Way
Victoria BC
V8X 5J2

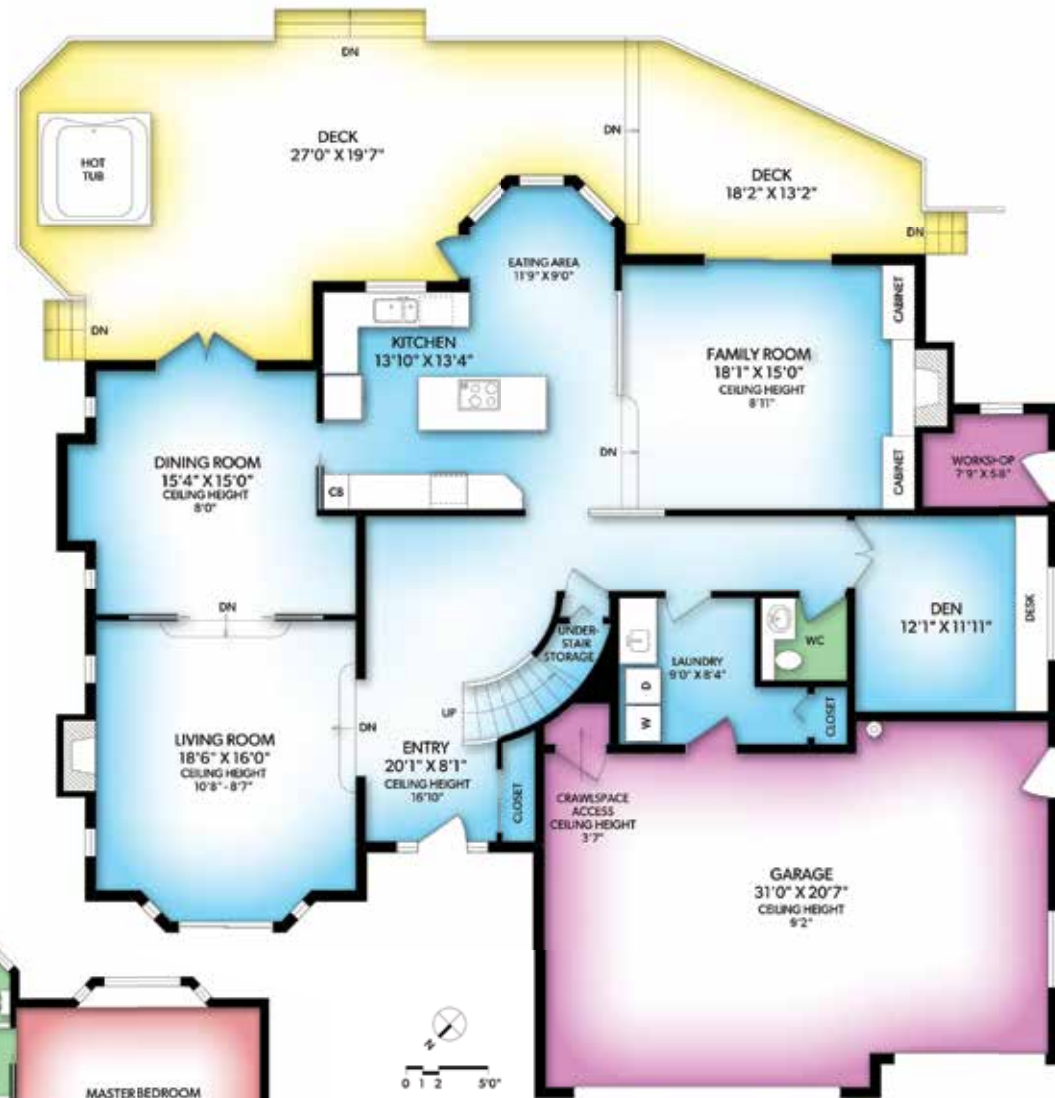


Mark Lawless
250-744-3301
marklawless@remax.net
www.marklawless.com

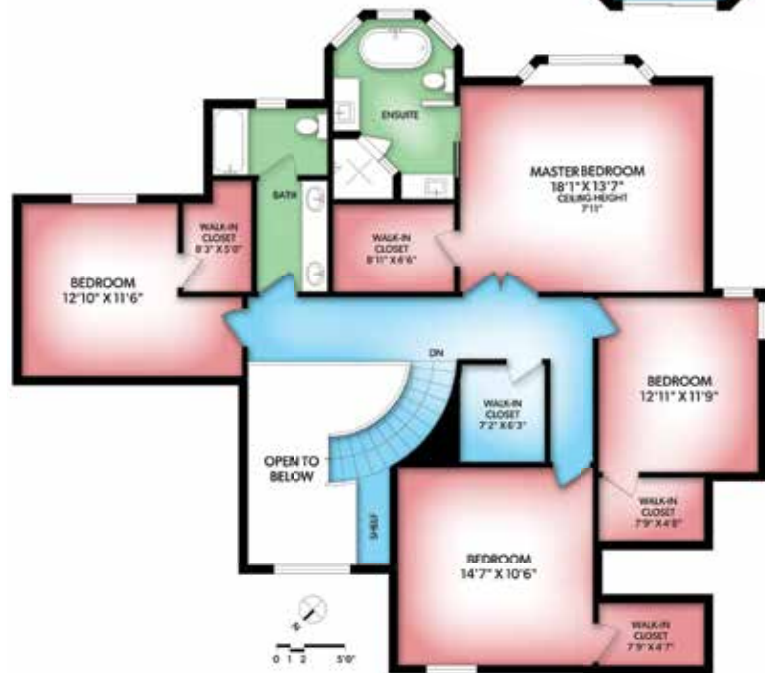


www.marklawless.com

MAIN FLOOR



UPPER FLOOR



FLOOR	FINISHED	UNFINISHED	TOTAL	OTHER AREAS
MAIN	1882	0	1882	GARAGE 686
UPPER	1588	0	1588	DECK 757
TOTAL	3470	0	3470	WORKSHOP 49



General Information

Listing Price: \$1,495,000
MLS: 374404
District: Saanich East
Bedrooms: 4
Bathrooms: 3

Interior Features

Basement Description

Lot Information

Lot Size: 12197 sq.ft
Lot Acres: 0.28 acres
Lot Shape: Pie
Tax Year: 2016
Taxes: \$5,847.63
Water: City/Munic.
Parking Type: Garage Triple

Lot Features

Building Information

Year Built: 1998
Fuel: Gas
Heating: Forced Air
Foundation: Concrete Poured
Roof: Fibreglass
Exterior: Stone, Wood

Schools

Elementary: 63 Lochside
Junior: 63 Royal Oak
Senior: 63 Claremont

See photos, floorplans, and more at:

<http://uplist.ca/h/MarkLawless-917-Maltwood-Te>



Broadmead! Custom built 4 bed and den executive family home with triple car garage and many updates. The open floor plan offers oversized rooms, including a spacious updated Kitchen with granite, large Family Room with FP, formal Living Room with gas FP, separate Dining Room, and den on the main. Upstairs you'll find 4 large bedrooms - all with walk-in closets. The Master Bedroom includes an Ensuite with heated floors, a large soaker tub, and a beautiful separate shower with overhead lighting. Large partially fenced and landscaped yard includes south facing 700+ sq ft of deck with private Hot Tub, perfect for outdoor entertaining and relaxing. This beautiful Family Home offers quality custom finishing throughout.