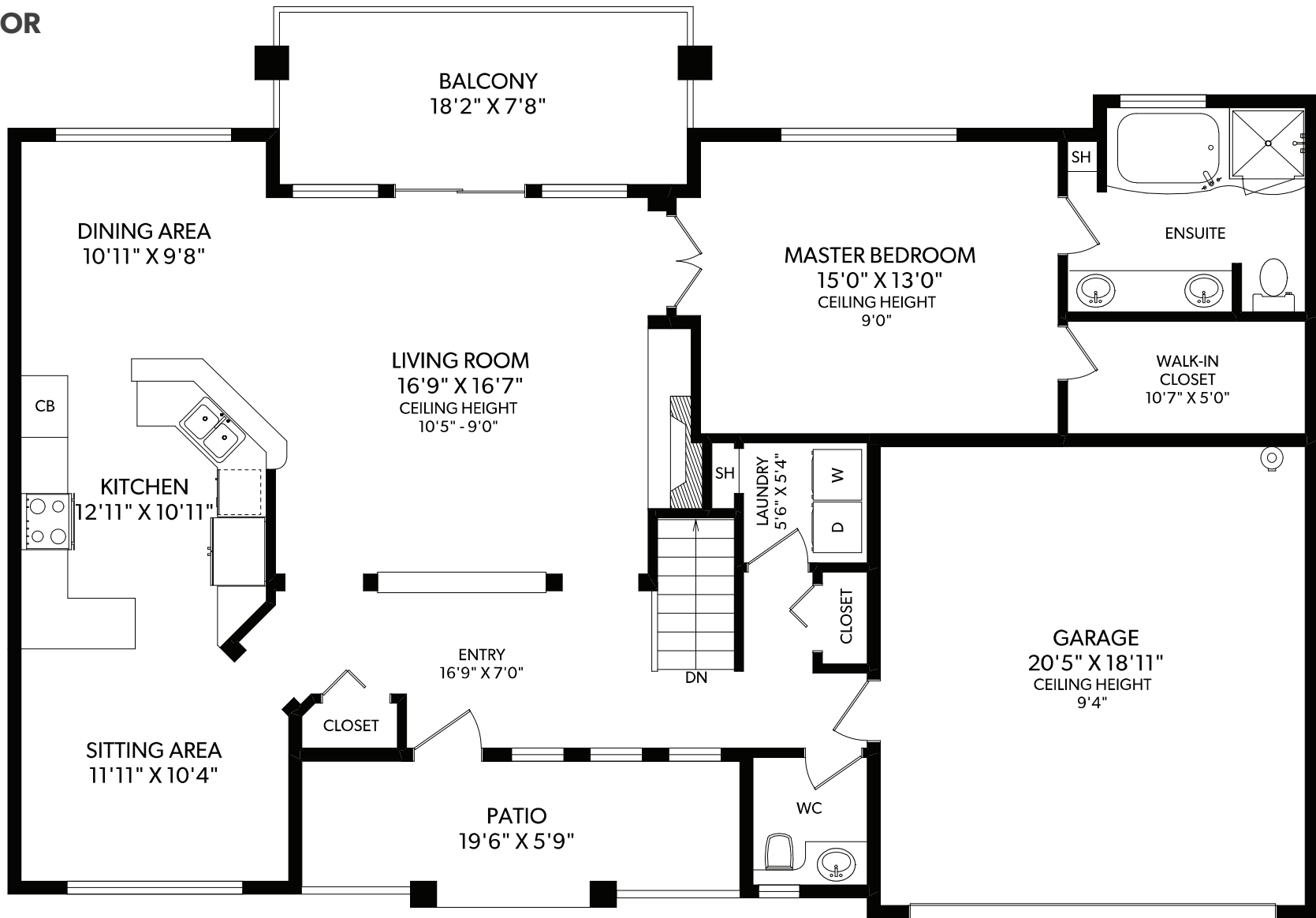
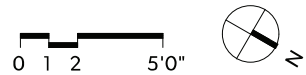


MAIN FLOOR



FLOOR	FINISHED	UNFINISHED	TOTAL	OTHER AREAS
MAIN	1457	0	1457	GARAGE 410
LOWER	821	954	1775	PATIOS 246
TOTAL	2278	954	3232	BALCONY 147



623 ST ANDREWS LANE

DOCUMENT PREPARED FOR THE EXCLUSIVE USE OF

MARSHA CRAWFORD*

250-388-6998
ORDERS@REALFOTO.CA

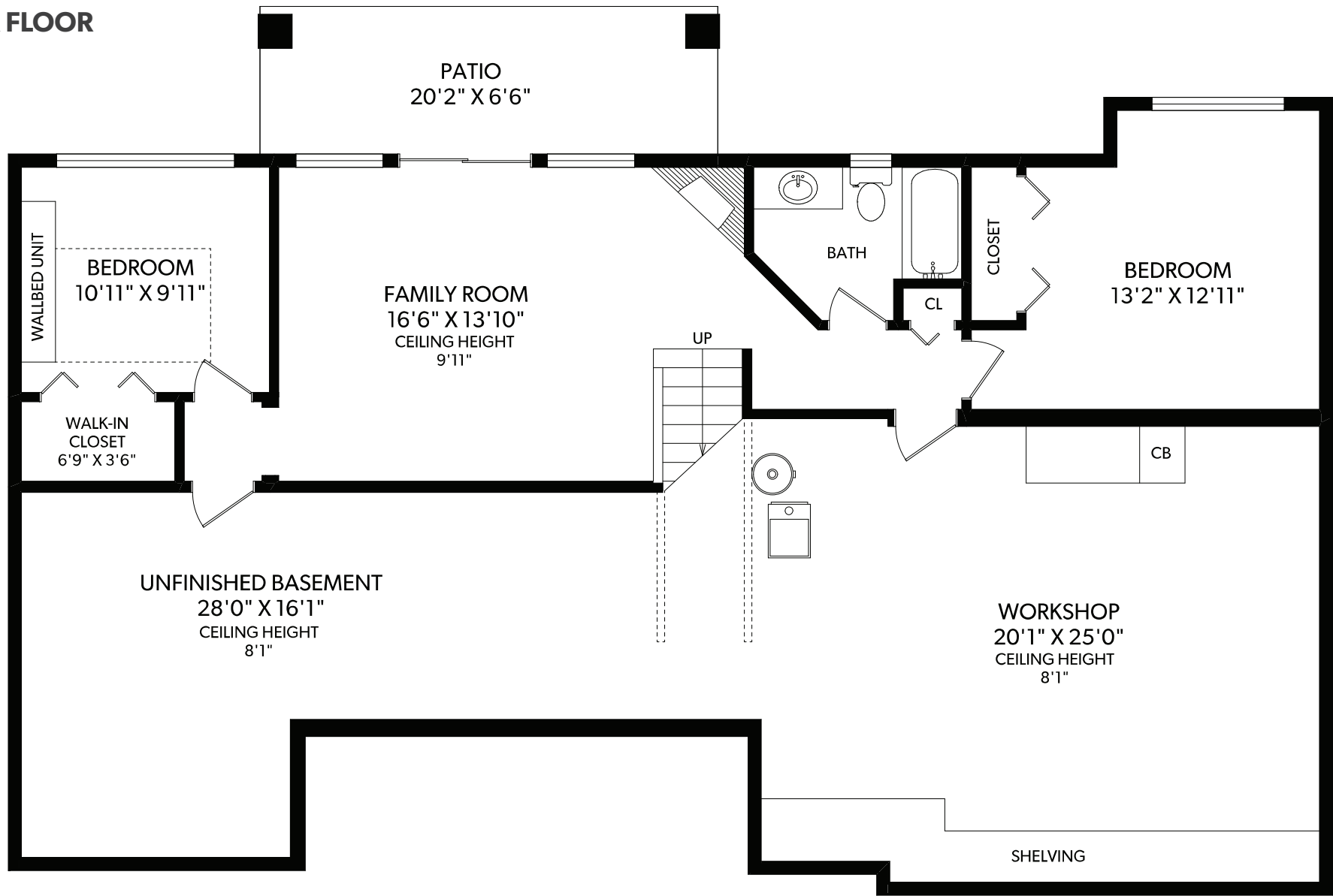
*PERSONAL REAL ESTATE CORPORATION
MEASURED 03/27/2019 BY CLAY OVINGE



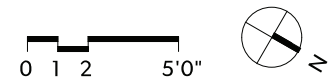
RE/MAX
CAMOSUN
Each Office Independently Owned and Operated

All information furnished regarding this property is from sources deemed reliable but no warranty or representation is made to the accuracy thereof. Purchaser to verify measurements if important.

LOWER FLOOR



FLOOR	FINISHED	UNFINISHED	TOTAL	OTHER AREAS
MAIN	1457	0	1457	GARAGE 410
LOWER	821	954	1775	PATIOS 246
TOTAL	2278	954	3232	BALCONY 147



REAL FOTO **623 ST ANDREWS LANE**
DOCUMENT PREPARED FOR THE EXCLUSIVE USE OF
MARSHA CRAWFORD*

250-388-6998 *PERSONAL REAL ESTATE CORPORATION
ORDERS@REALFOTO.CA MEASURED 03/27/2019 BY CLAY OVINGE



All information furnished regarding this property is from sources deemed reliable but no warranty or representation is made to the accuracy thereof. Purchaser to verify measurements if important.