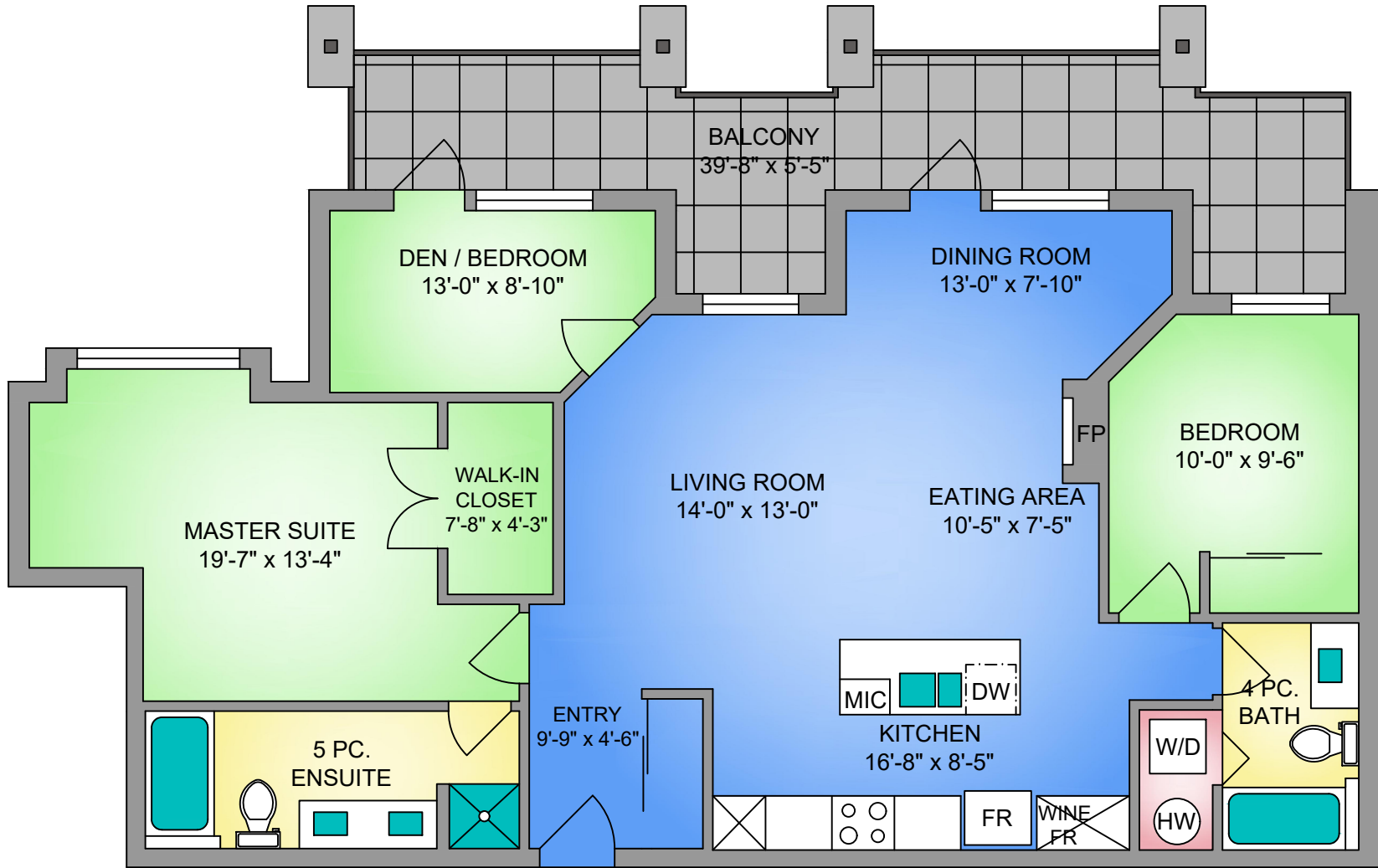


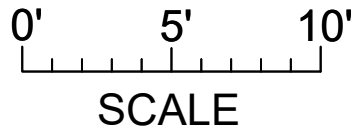
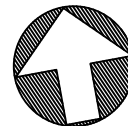
UNIT 309 - 1011 BURDETT AVENUE

1225 SQ. FT.

8'-7" CEILING



NORTH



UNIT 309 - 1011 BURDETT AVENUE JULY 17, 2017		
PREPARED FOR THE EXCLUSIVE USE OF MARSHA CRAWFORD PLANS MAY NOT BE 100% ACCURATE, IF CRITICAL BUYER TO VERIFY.		
FLOOR	AREA (SQ. FT.)	
	FINISHED	BALCONY
THIRD	1225	237



250-884-9753
matt@propermeasure.com
www.propermeasure.com