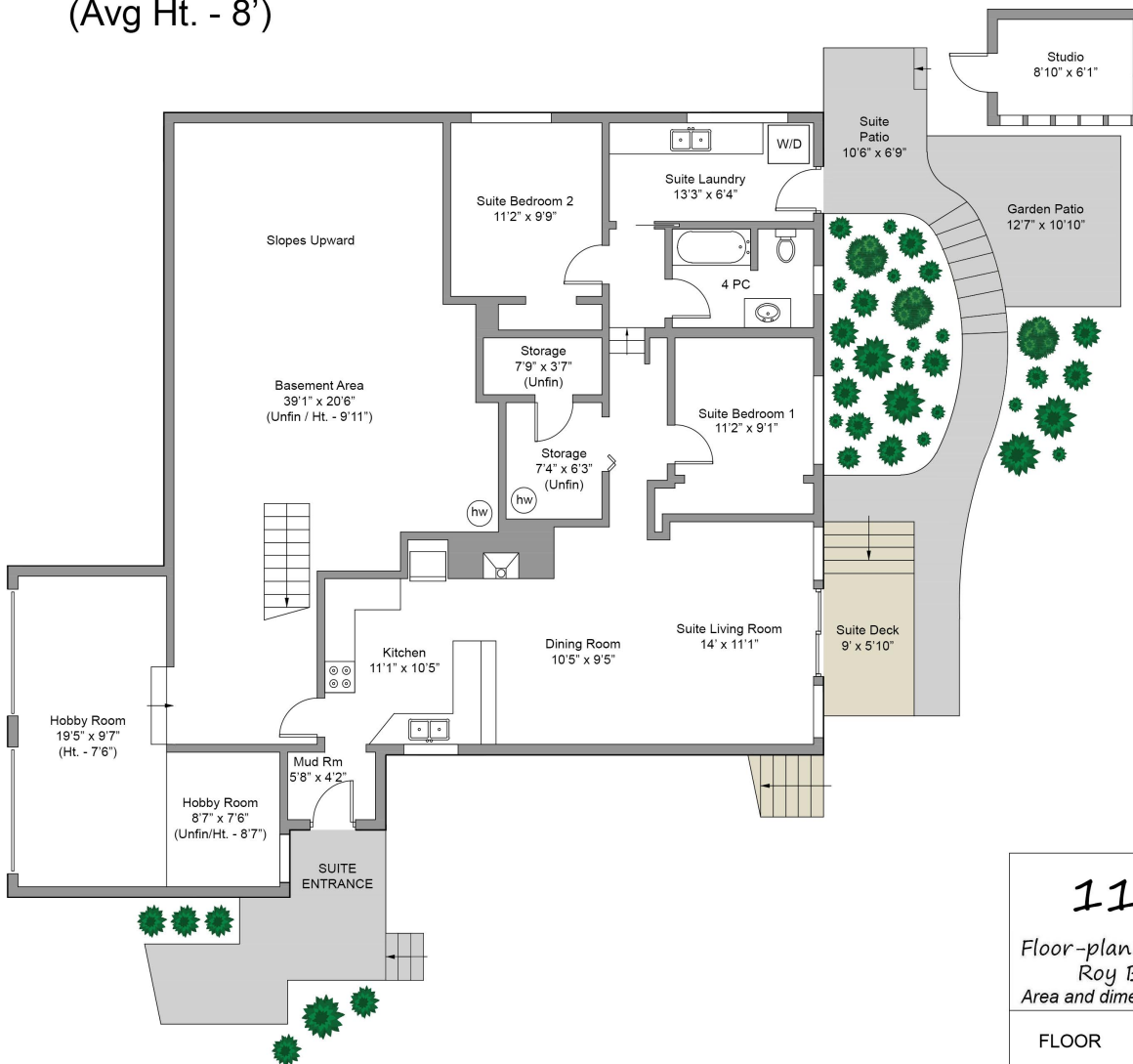


Main Floor
1336 Sqft.
(Avg Ht. - 8'2")

Lower Floor
2064 Sqft.
(Avg Ht. - 8')



1160 Rhoda Ln.

Floor-plan was created for the exclusive use of Roy Banner and RE/MAX Camosun
Area and dimensions are approximate, buyer to verify on site.

FLOOR	AREA (Sq. Ft.)		
	Finished	Unfinished	Garage
Main	1336	0	
Lower	1102	962	
Total	2438	962	
Studio	54	0	