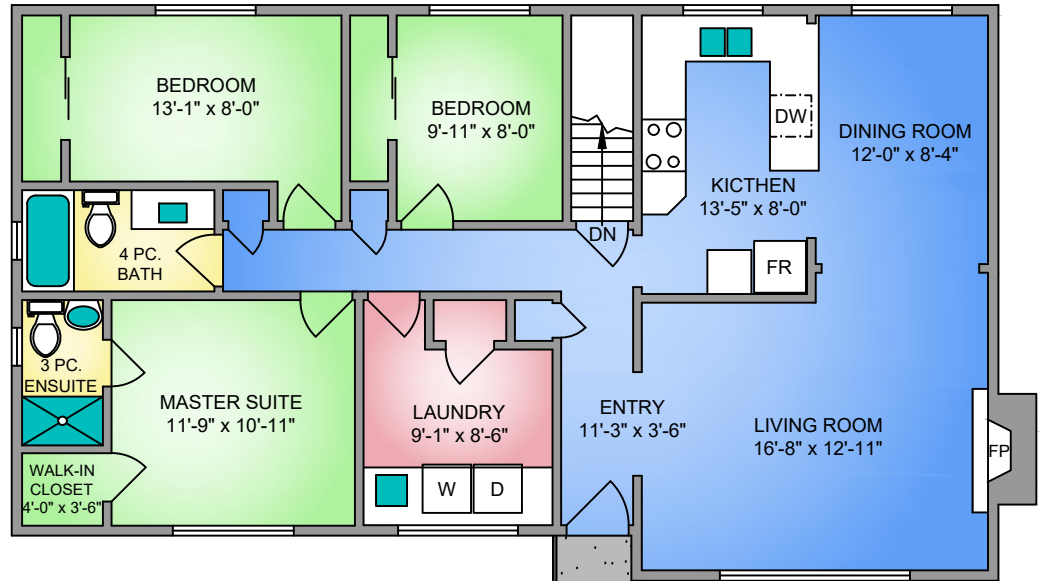
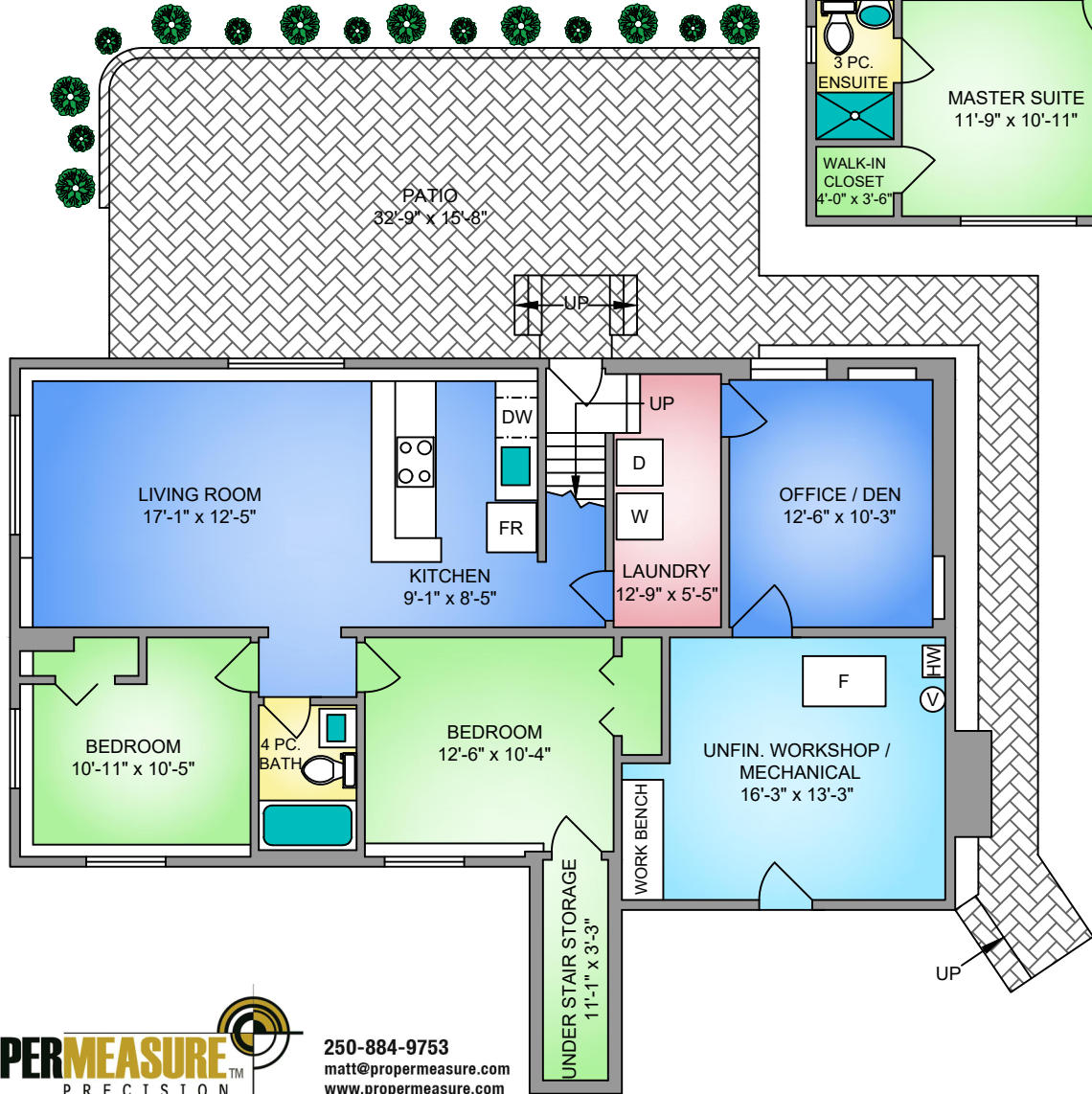


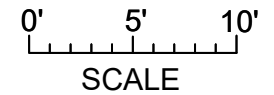
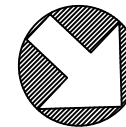
LOWER FLOOR
1039 SQ. FT.
7'-6" CEILING HEIGHT



MAIN FLOOR
1256 SQ. FT.
8' CEILING HEIGHT



NORTH



4148 QUADRA STREET JULY 10, 2018			
PREPARED FOR THE EXCLUSIVE USE OF LAINE BUCKINGHAM PLANS MAY NOT BE 100% ACCURATE, IF CRITICAL BUYER TO VERIFY.			
FLOOR	AREA (SQ. FT.)		
	FINISHED	UNFINISHED	PATIO
MAIN	1256	-	-
LOWER	1039	216	494
TOTAL	2295	216	494