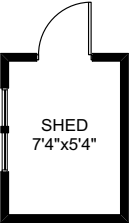
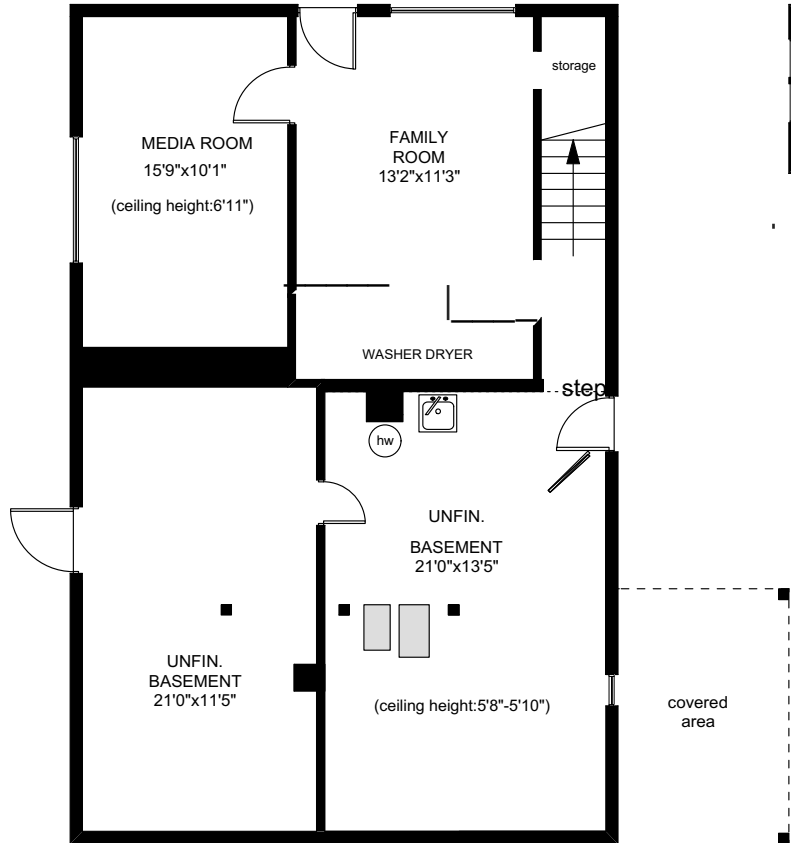
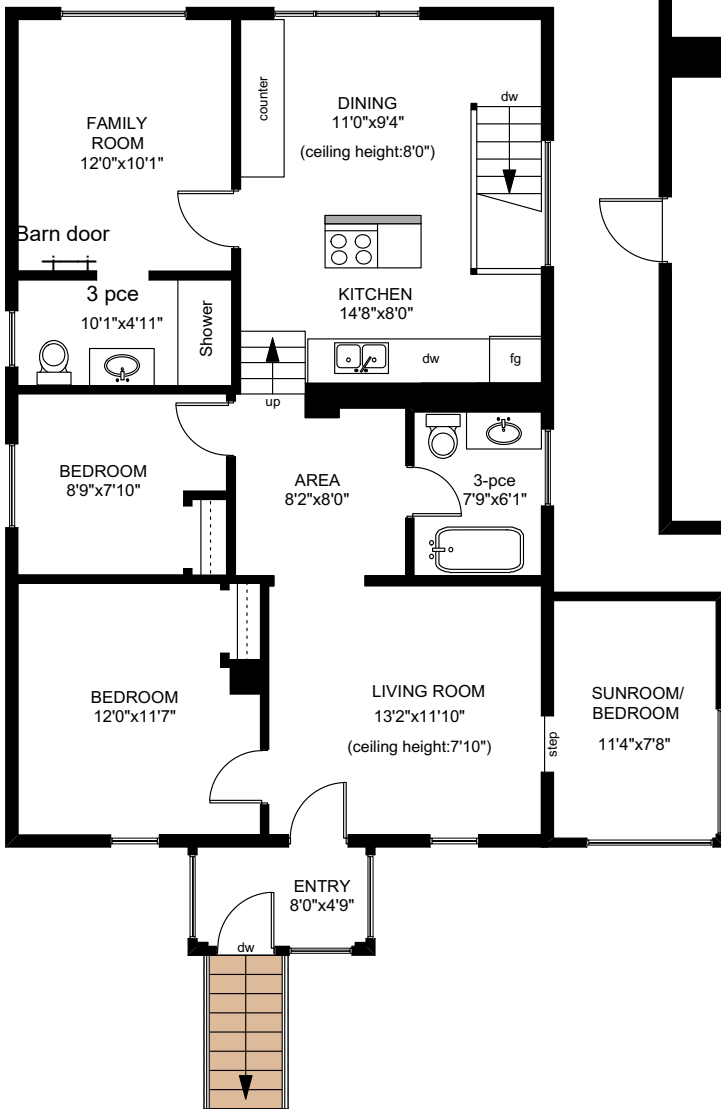


2222 BOWKER AVENUE

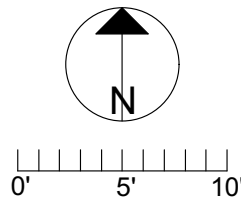
LOWER FLOOR
1049 SQ.FT



MAIN FLOOR
1194 SQ.FT



	FINISHED SQ. FT.	UNFINISHED SQ. FT.	TOTAL SQ. FT.
MAIN	1194	0	1194
LOWER	422	627	1049
TOTAL	1616	627	2243
SHED	0	49	49



PREPARED FOR THE EXCLUSIVE USE OF
DAVE O'BRYNE OF
ROYAL LEPAGE COAST CAPITAL REALTY

MEASURED ON: 04/19/12
DRAWING FILE: 15743

Tafe Measure VICTORIA, B.C.
Ph. 883.8894
www.tafemeasure.com