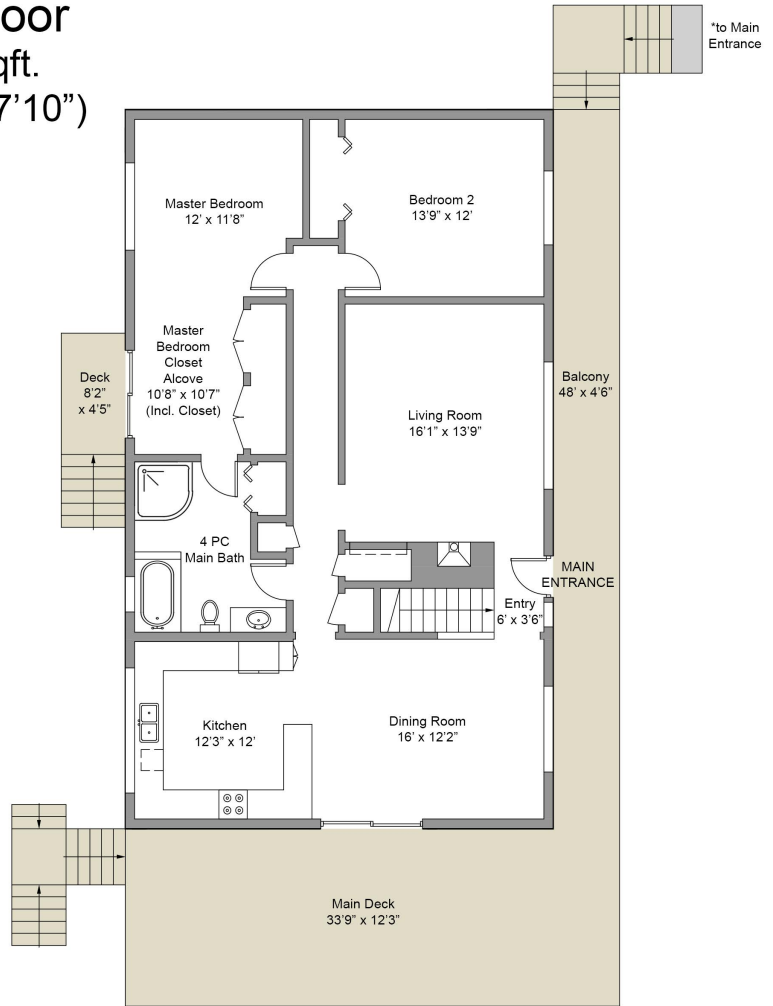
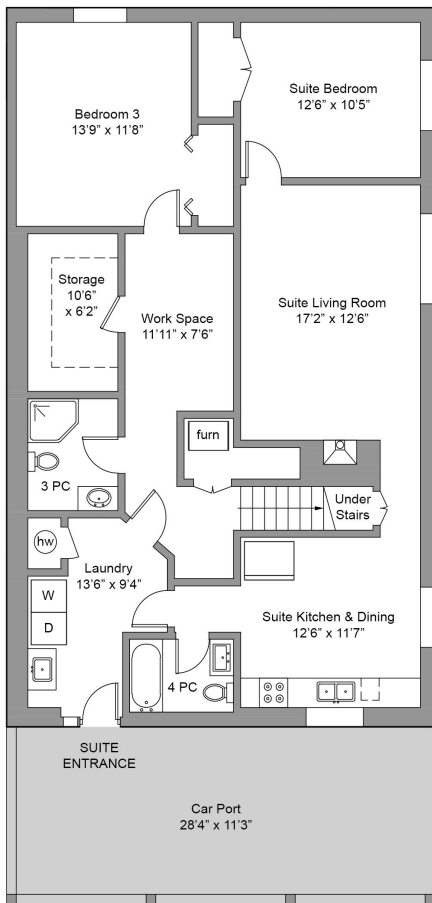


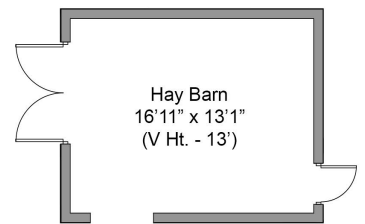
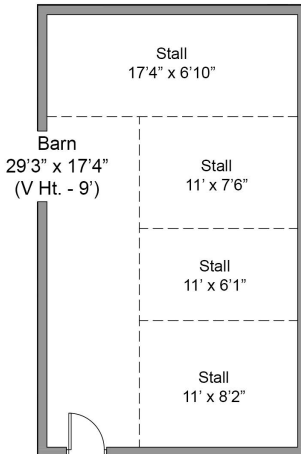
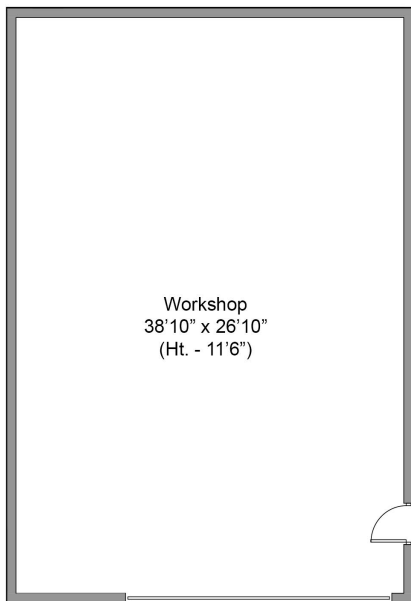
# Main Floor

1441 Sqft.  
(Avg Ht. - 7'10")



# Lower Floor

1441 Sqft.  
(Avg Ht. - 6'11")



## 4520 Markham St.

This floor-plan was created for the exclusive use of Deanna Noyce and RE/MAX Camosun. Area and dimensions are approximate, buyer to verify on site.

FLOOR	AREA (Sq. Ft.)		
	Finished	Unfinished	Garage
Main	1441	0	
Lower	1311	130	
Total	2752	130	
Workshop	0	1133	
Barn	0	570	
Hay Barn	0	263	