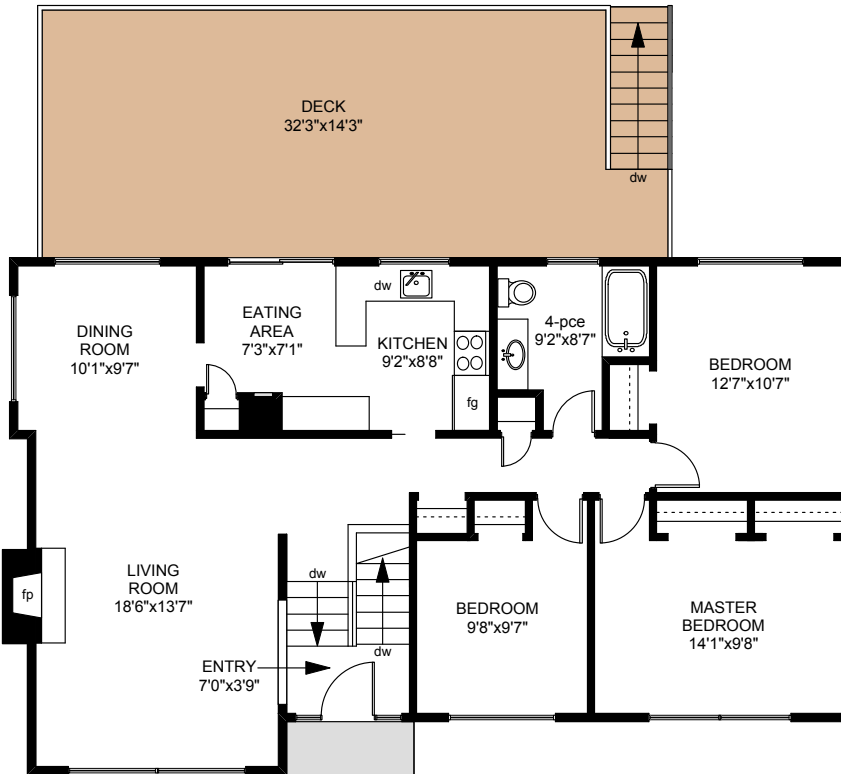
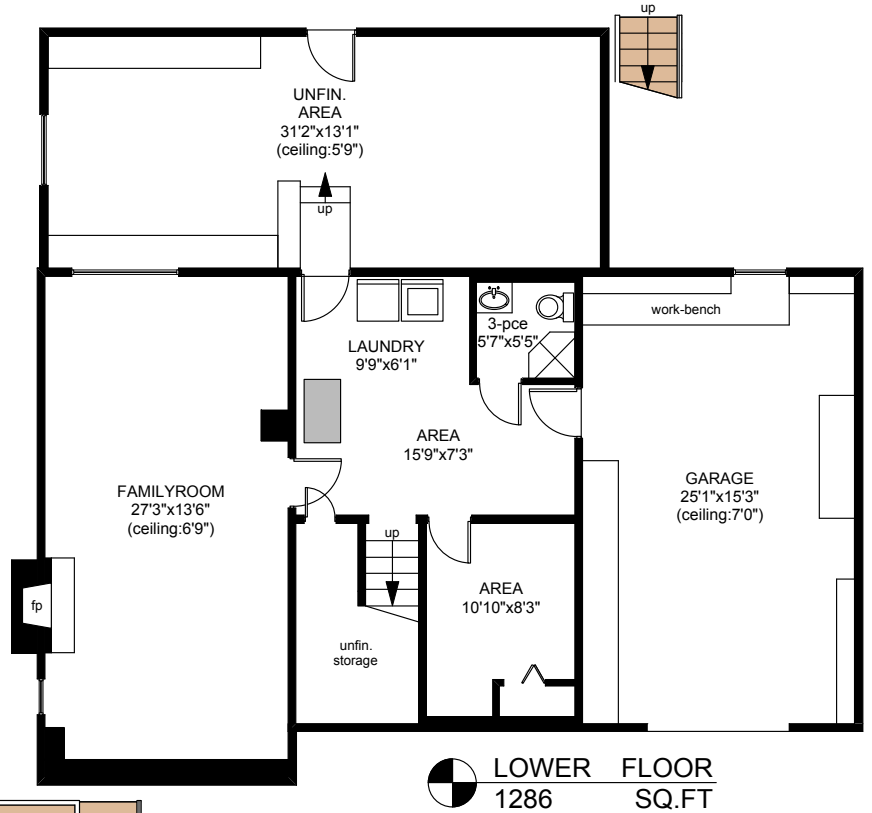
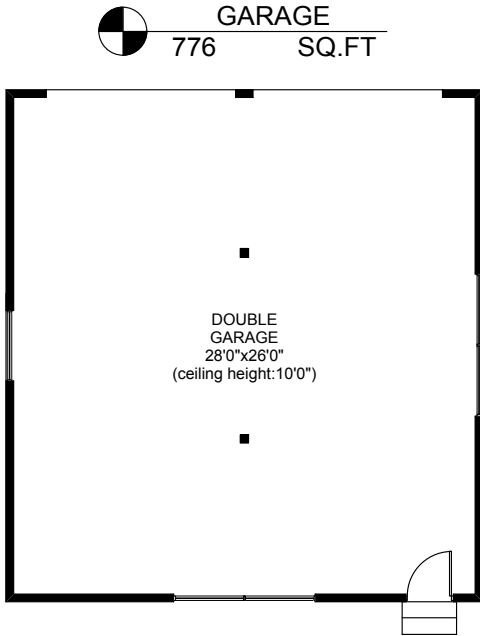
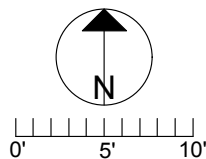


1630 ELM STREET



	FINISHED SQ. FT.	UNFINISHED SQ. FT.	TOTAL SQ. FT.
MAIN	1281	0	1281
LOWER	782	504	1286
TOTAL	2063	504	2567
GARAGE	0	419	419
GARAGE	0	776	776
DECK	0	463	463



PREPARED FOR THE EXCLUSIVE USE OF
WENDY MORETON OF NEWPORT REALTY

MEASURED ON: 10/13/11
DRAWING FILE: 09792

Taf VICTORIA, B.C.
Measure Ph. 883.8894
www.tafmeasure.com

NOTE: This floor plan is provided by Newport Realty Ltd. as a convenient reference only, and is not to be relied upon as accurate. Prospective Buyers must satisfy themselves not only of the actual measurements, but also to the status of any finished space shown on this floor plan, specifically in relation to minimum ceiling height for habitable rooms required by the BC Building Code, allowable finished floor area in relation to current zoning, and determination if space was developed with necessary municipal permits.