



Gary Brown*

REALTOR® *P.R.E.C

(250) 216-7625

gary@smartmovevictoria.com

smartmovevictoria.com



Linda Clark

REALTOR®

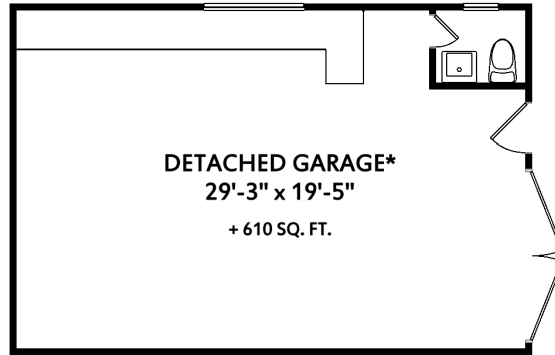
(250) 213-7194

linda@smartmovevictoria.com

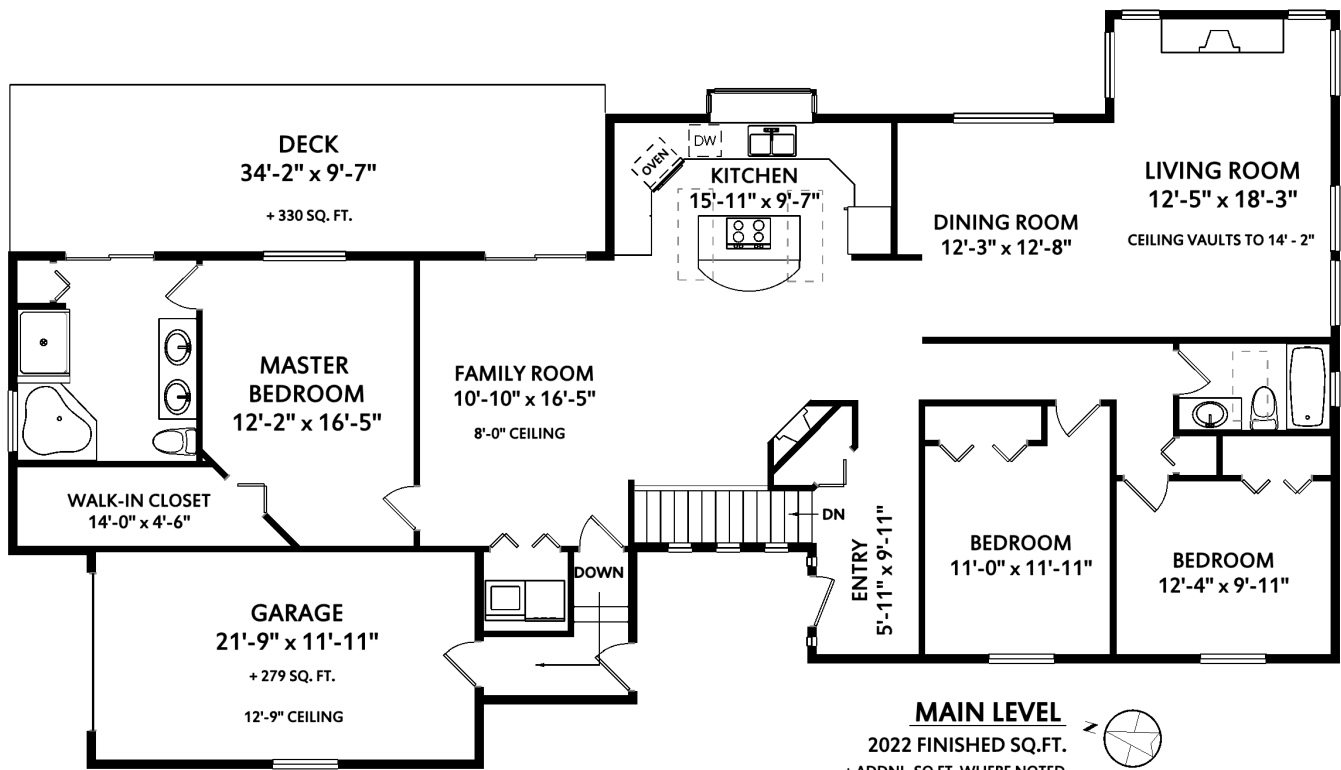
smartmovevictoria.com



199 Petworth Dr



* DOES NOT REP. ACTL. LOCATION



MAIN LEVEL
2022 FINISHED SQ.FT.
+ ADDNL. SQ.FT. WHERE NOTED

	Fin. Sq.Ft.	UnFin. Sq.Ft.	Total Sq.Ft.
Garage	0	279	279
Detached Garage	610	0	610
Main Level	2022	0	2022
Lower Level	1760	240	2000
Total	4392	519	4911

Shown length and width dimensions are approximate. Area sq.ft. is representative of the on-site measurements. (1" accuracy)



Figures, Calculations, and Representations are for indicative and promotional purpose only. VI Standard Real Estate Services Inc. will not be liable for any damages of any kind arising from the mis-use of this information.



Gary Brown*

REALTOR® *P.R.E.C

(250) 216-7625

gary@smartmovevictoria.com

smartmovevictoria.com



Linda Clark

REALTOR®

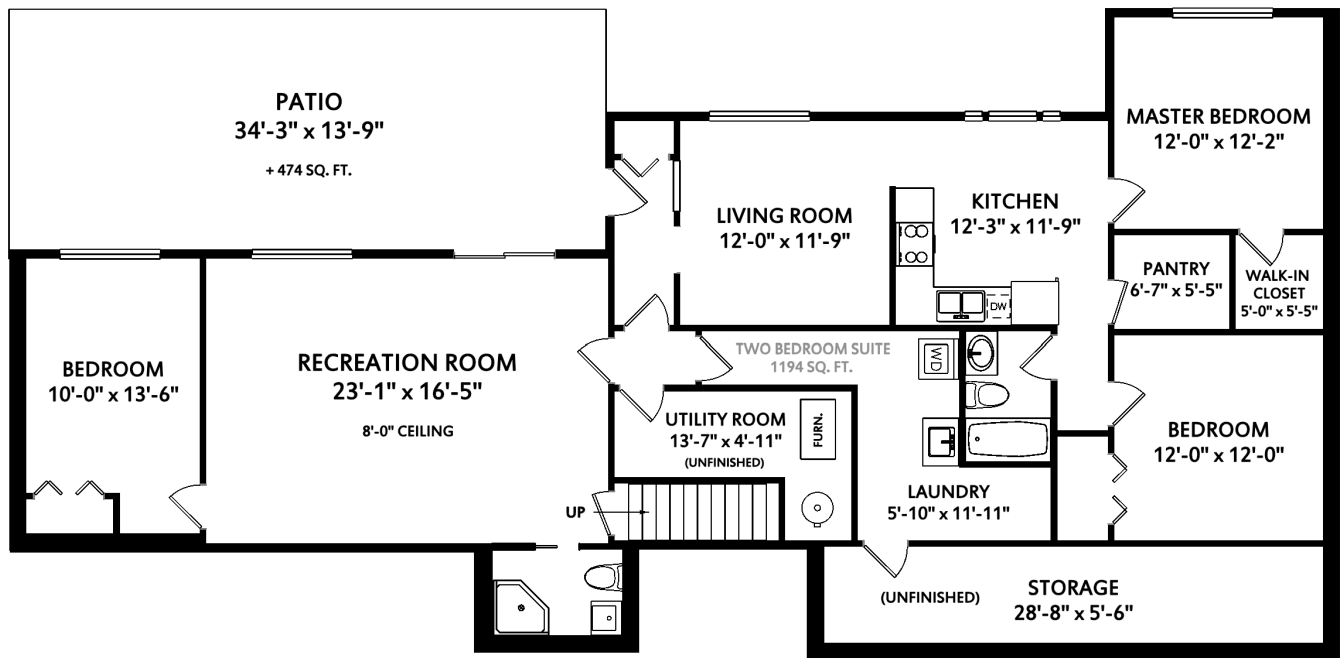
(250) 213-7194

linda@smartmovevictoria.com

smartmovevictoria.com



199 Petworth Dr



LOWER LEVEL

1760 FINISHED SQ.FT.
240 UNFINISHED SQ.FT.
+ ADDNL. SQ.FT. WHERE NOTED



	Fin. Sq.Ft.	UnFin. Sq.Ft.	Total Sq.Ft.
Garage	0	279	279
Detached Garage	610	0	610
Main Level	2022	0	2022
Lower Level	1760	240	2000
Total	4392	519	4911

Shown length and width dimensions are approximate. Area sq.ft. is representative of the on-site measurements. (1" accuracy)



Figures, Calculations, and Representations are for indicative and promotional purpose only. VI Standard Real Estate Services Inc. will not be liable for any damages of any kind arising from the mis-use of this information.