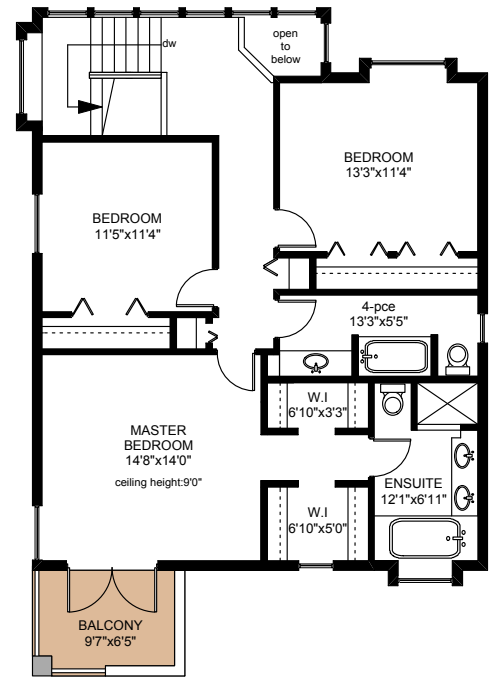
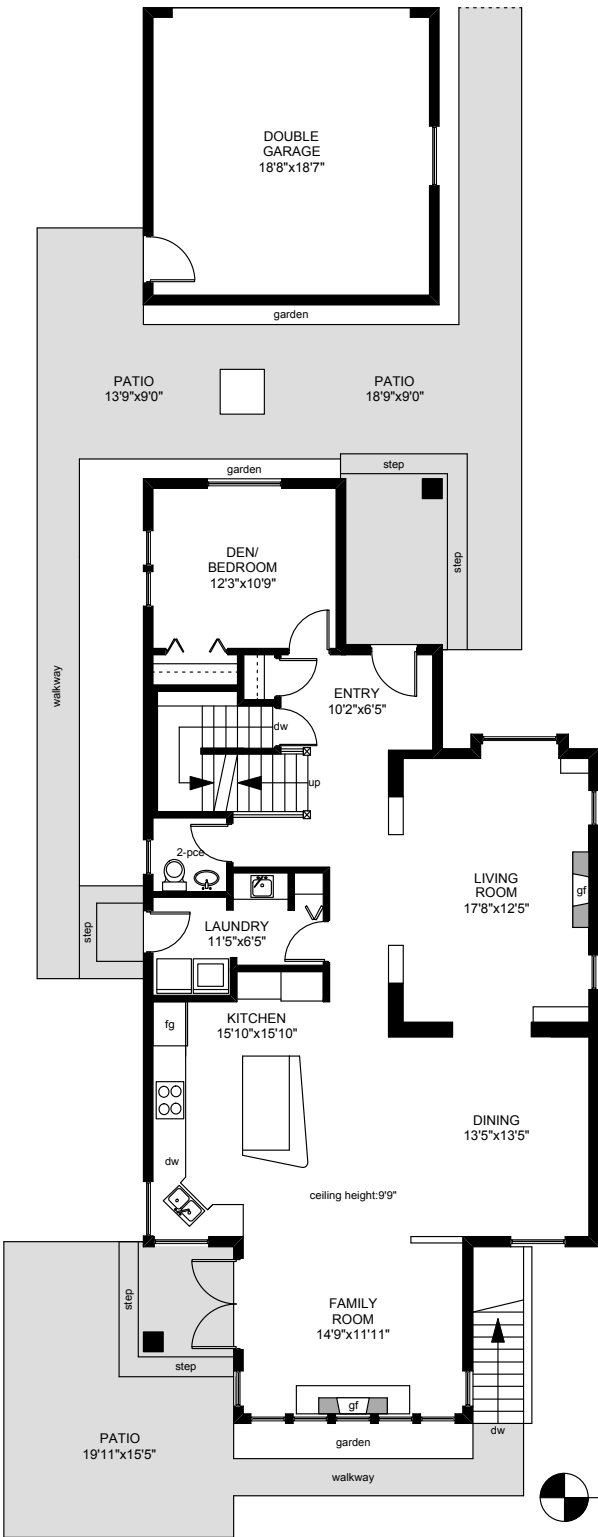


# 1187 TRANSIT ROAD

UPPER FLOOR  
1132 SQ.FT

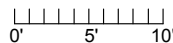


LOWER FLOOR  
1058 SQ.FT



MAIN FLOOR  
1516 SQ.FT

	FINISHED SQ. FT.	UNFINISHED SQ. FT.	TOTAL SQ. FT.
MAIN	1516	0	1516
UPPER	1132	0	1132
LOWER	0	1058	1058
<b>TOTAL</b>	<b>2648</b>	<b>1058</b>	<b>3706</b>
GARAGE	0	398	398
PATIOS	0	968	968
BALCONY	0	63	63



PREPARED FOR THE EXCLUSIVE USE OF  
MARC OWEN-FLOOD,  
PERSONAL REAL ESTATE CORPORATION  
ASSOCIATE BROKER, NEWPORT REALTY LTD.

MEASURED ON: 01/03/12  
DRAWING FILE: 09900

Tafe Measure VICTORIA, B.C.  
Ph. 883.8894  
www.tafemeasure.com

NOTE: This floor plan is provided by Newport Realty Ltd. as a convenient reference only, and is not to be relied upon as accurate. Prospective Buyers must satisfy themselves not only of the actual measurements, but also to the status of any finished space shown on this floor plan, specifically in relation to minimum ceiling height for habitable rooms required by the BC Building Code, allowable finished floor area in relation to current zoning, and determination if space was developed with necessary municipal permits.