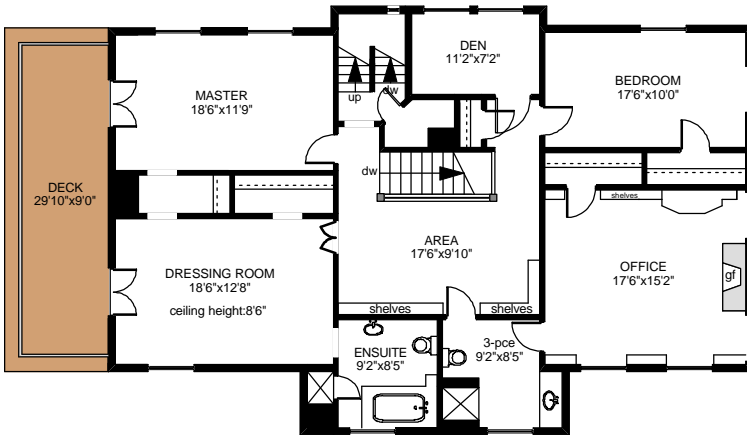
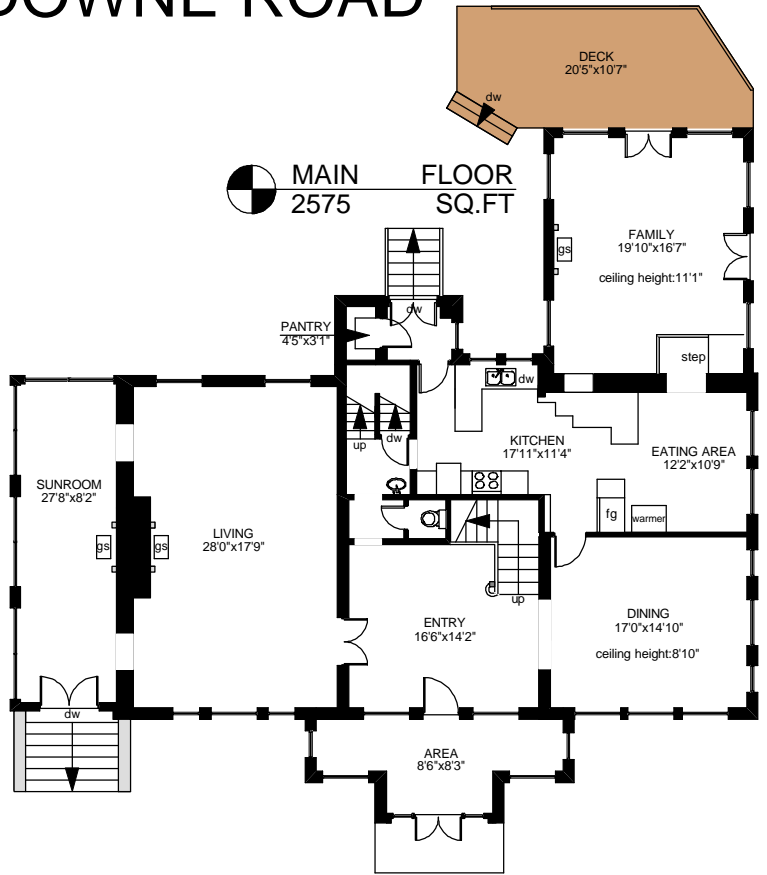


2625 LANSDOWNE ROAD

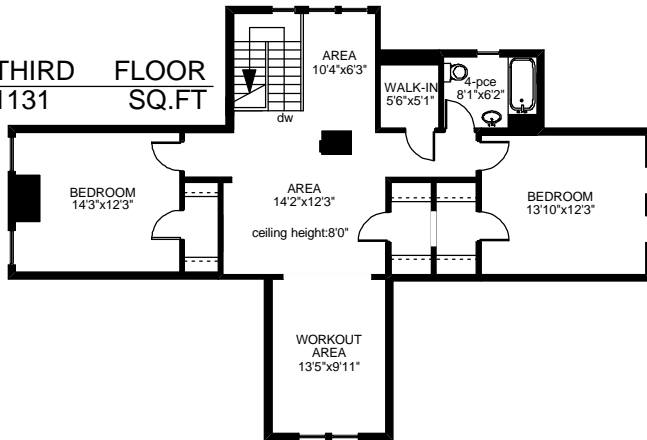
SECOND FLOOR
1836 SQ.FT



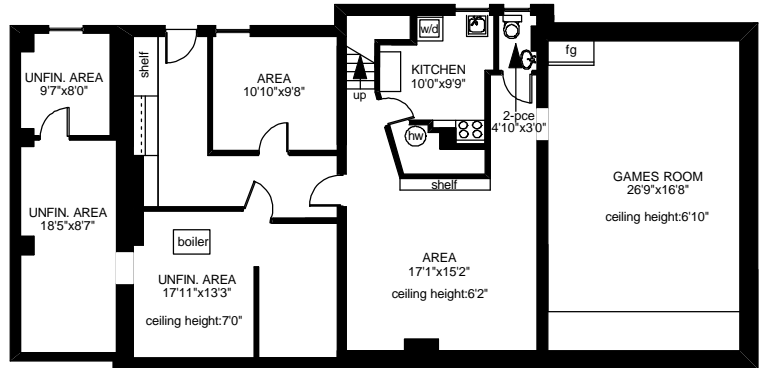
MAIN FLOOR
2575 SQ.FT



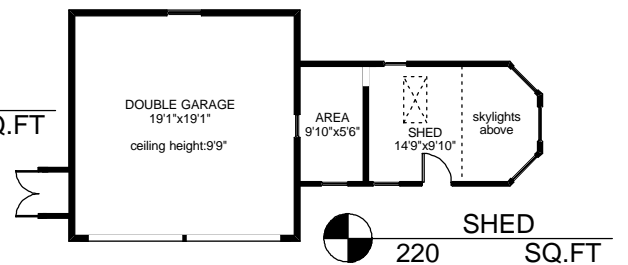
THIRD FLOOR
1131 SQ.FT



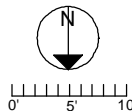
LOWER FLOOR
1970 SQ.FT



GARAGE
403 SQ.FT



	FINISHED SQ. FT.	UNFINISHED SQ. FT.	TOTAL SQ. FT.
MAIN	2575	0	2575
SECOND	1836	0	1836
THIRD	1131	0	1131
LOWER	1427	543	1970
TOTAL	6969	543	7512
GARAGE	0	403	403
SHED	0	220	220
DECKS	0	515	515



PREPARED FOR THE EXCLUSIVE USE OF
MARC OWEN-FLOOD, NEWPORT REALTY Ltd.

MEASURED ON: 01/13/09
DRAWING FILE: 07844

Tafmeasure VICTORIA, B.C.
Measure Ph. 883.8894
www.tafmeasure.com

NOTE: This floor plan is provided by Newport Realty Ltd. as a convenient reference only, and is not to be relied upon as accurate. Prospective Buyers must satisfy themselves not only of the actual measurements, but also to the status of any finished space shown on this floor plan, specifically in relation to minimum ceiling height for habitable rooms required by the BC Building Code, allowable finished floor area in relation to current zoning, and determination if space was developed with necessary municipal permits.