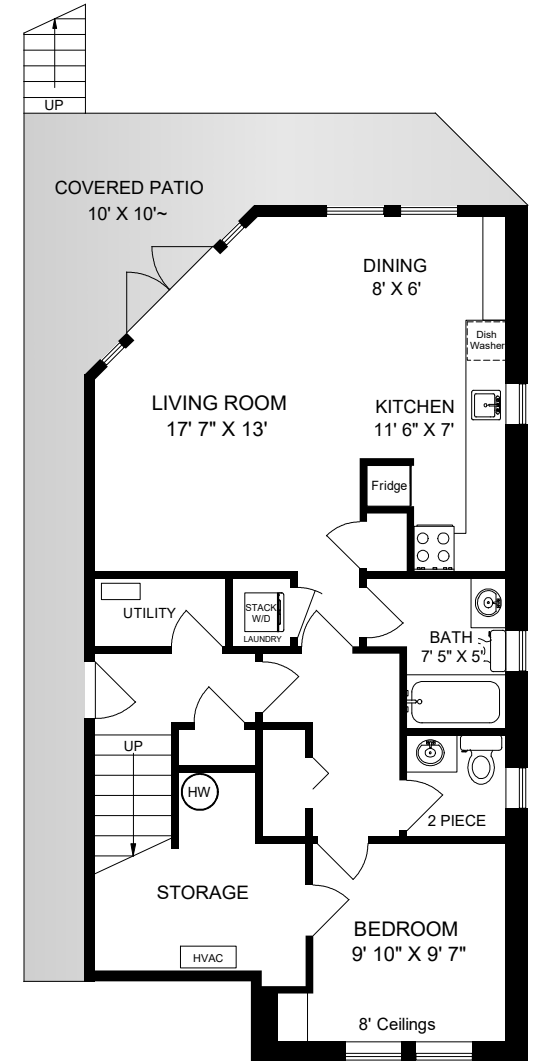
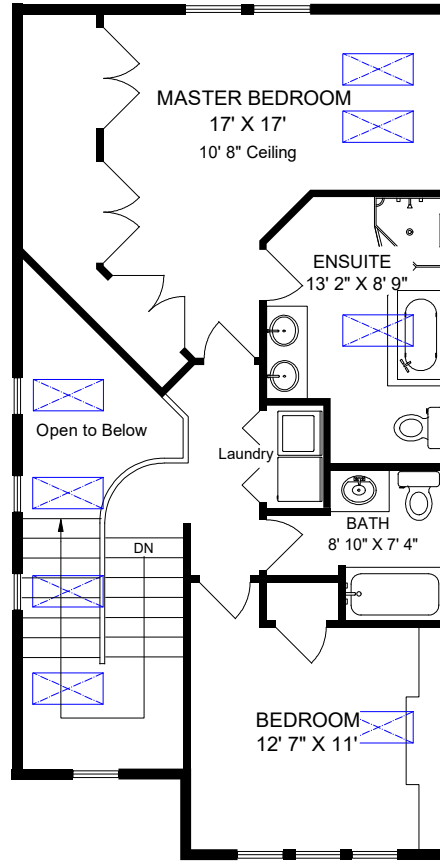
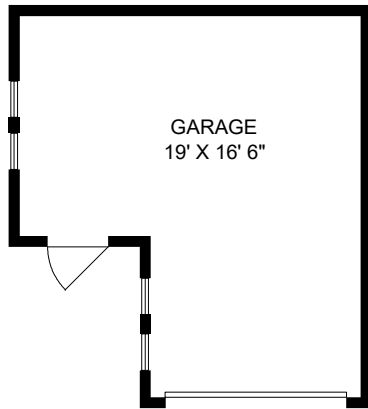
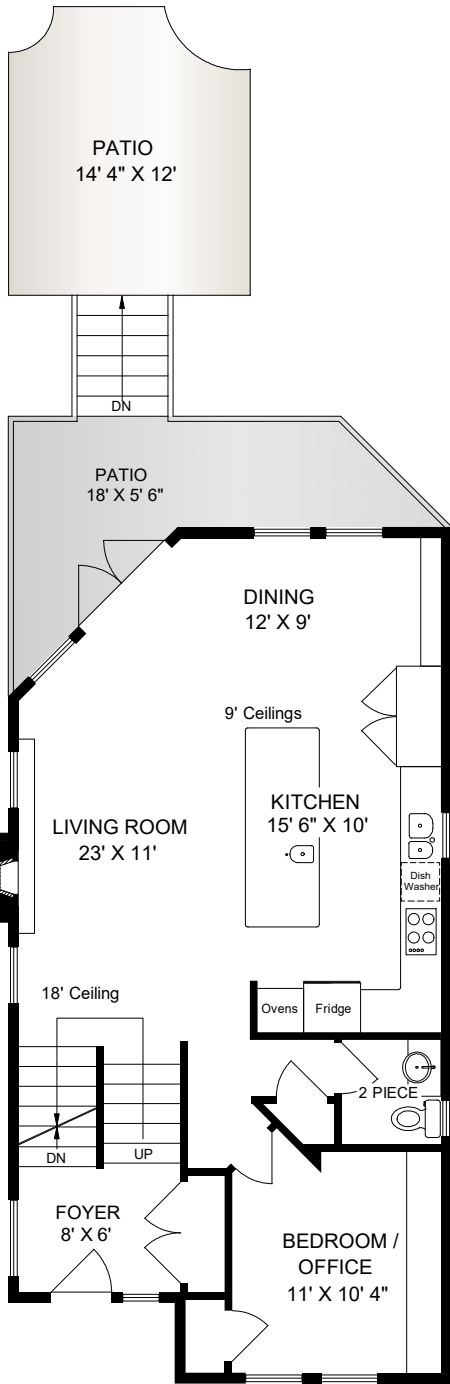


62 GOVERNMENT STREET



	FINISH SQ. FT.	UNFINISH SQ. FT.	TOTAL SQ. FT.
MAIN	867		867
UPPER	840		840
LOWER	867		867
TOTAL	2574		2574
PATIOS		460	460
GARAGE		308	308

EXCLUSIVELY FOR SHAREN WARDE
OF ROYAL LEPAGE COAST CAPITAL REALTY

JAN. 28 2019

REF # 5608

Island Measure
Residential and Commercial Floor Plans
250-818-8273 islandmeasure.com

MEASUREMENTS MAY NOT BE 100% ACCURATE. IF CRITICAL, BUYER TO VERIFY.
ROOM SIZES ARE NOT USED TO CALCULATE AREA.
FLOOR PLANS ARE PROVIDED FOR CONVENIENCE ONLY.