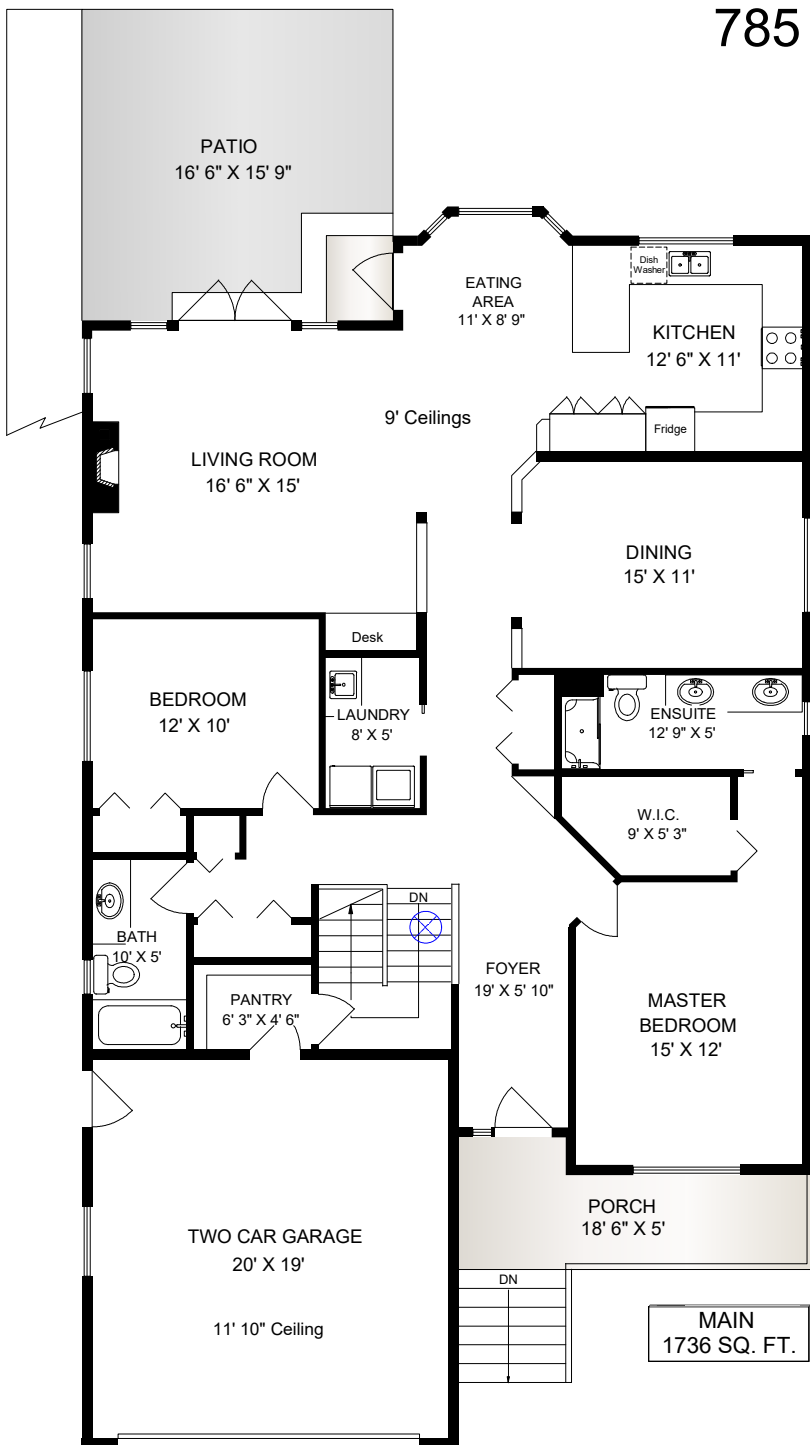
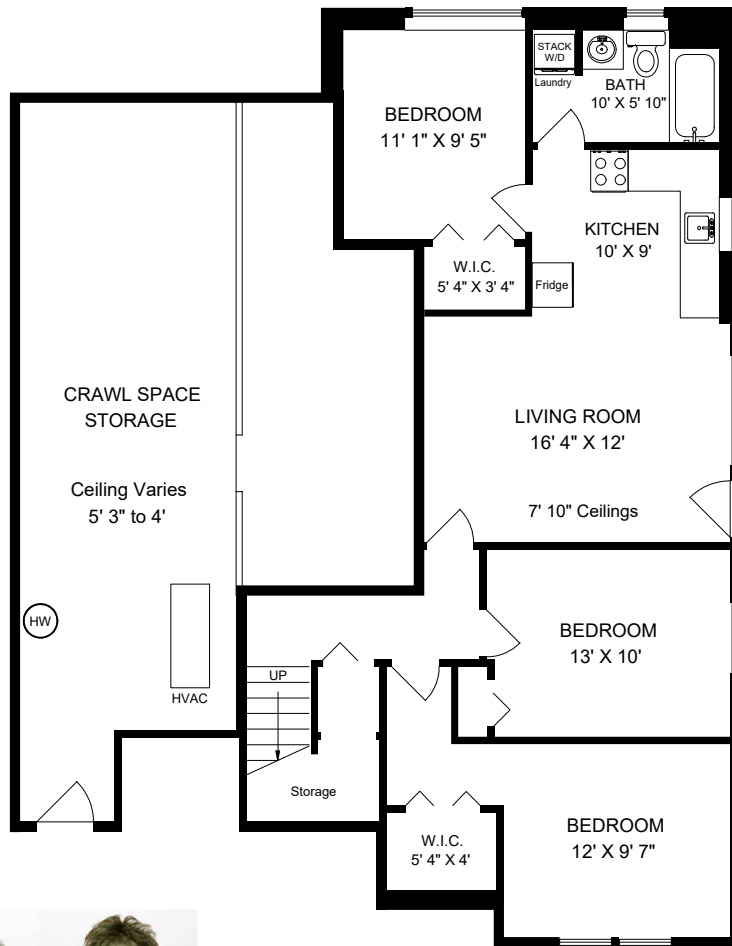


785 ROGERS WAY



**MAIN
1736 SQ. FT.**



Suite is 558 sq. ft.

**LOWER
1045 SQ. FT.**



	FINISH SQ. FT.	UNFINISH SQ. FT.	TOTAL SQ. FT.
MAIN	1736		1736
LOWER	1045		1045
TOTAL	2781		2781
GARAGE		410	410
DECKS		157	157
PATIO		234	234
SHED(not shown)		84	84



EXCLUSIVELY FOR SHAREN WARDE
OF ROYAL LEPAGE COAST CAPITAL REALTY

JULY 13 2018

REF # 5339

Island Measure
Residential and Commercial Floor Plans
250-818-8273 islandmeasure.com

MEASUREMENTS MAY NOT BE 100% ACCURATE. IF CRITICAL, BUYER TO VERIFY.
ROOM SIZES ARE NOT USED TO CALCULATE AREA.
FLOOR PLANS ARE PROVIDED FOR CONVENIENCE ONLY.